

# Georg Baselitz

*Prints from the 1960s*

1. Ohne Titel (Untitled), 1964  
 bez. u.l.: Probedruck von der unbeschnittenen Platte, 2. Zustand, 1. Probe  
 sign./dat. u.r.: 64 Wolfsburg G Baselitz  
 [inscriptions bottom left: test print of the uncut plate, 2nd state, 1st test  
 sign./dat. bottom right: 64 Wolfsburg G Baselitz]  
 Etching and soft-ground etching on zinc plate; on paper  
 Image size: 11 x 9 5/8 inches (27.9 x 24.4 cm)  
 Paper size: 31 x 20 5/8 inches (78.7 x 52.7 cm)  
 Framed dimensions: 36 1/2 x 24 3/4 inches (92.7 x 62.9 cm)



1a.  
 Ohne Titel (Untitled), 1964  
 num.: 3/20  
 sign./dat.: Baselitz 64  
 Etching and soft-ground etching on zinc  
 plate; on copper printing paper  
 Image size: 7 1/4 x 9 5/8 inches  
 (18.4 x 24.4 cm)  
 Paper size: 20 5/8 x 15 5/8 inches  
 (52.4 x 39.7 cm)  
 Framed dimensions: 24 3/4 x 18 13/16 inches  
 (62.9 x 47.8 cm)



2.

*Idol*, 1964

num: 16/20

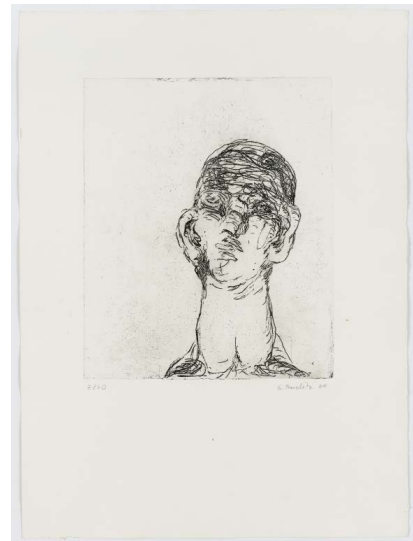
sign./dat.: Baselitz 64

Etching and soft-ground etching on zinc plate; on paper

Image size: 12 x 9  $\frac{7}{8}$  inches (30.5 x 25.1 cm)

Paper size: 26  $\frac{1}{4}$  x 20 inches (66.7 x 50.8 cm)

Framed dimensions: 29  $\frac{1}{16}$  x 23  $\frac{1}{8}$  inches (73.8 x 58.7 cm)



2a.

*Idol*, 1964

num.: 7/20

sign./dat.: G. Baselitz 64

Etching and soft-ground etching on zinc plate; on copper printing paper

Image size: 11  $\frac{7}{8}$  x 9  $\frac{7}{8}$  inches  
(30.2 x 25.1 cm)

Paper size: 21 x 15  $\frac{1}{4}$  inches  
(53.3 x 38.7 cm)

Framed dimensions: 24  $\frac{1}{16}$  x 18  $\frac{13}{16}$  inches  
(62.7 x 47.8 cm)



3.

*Hund (Dog)*, 1964

num: 9/20

sign./dat.: Baselitz 64

Etching and soft-ground etching on zinc plate; on copper printing paper

Image size: 9 5/8 x 12 1/4 inches (24.4 x 31.1 cm)

Paper size: 15 3/8 x 22 7/8 inches (39 x 58.1 cm)

Framed dimensions: 18 13/16 x 24 13/16 inches (47.8 x 63 cm)



4.

*Heulende Hunde (Howling Dogs)*, 1964

num.: 11/20

sign./dat.: Baselitz 64

Etching and soft-ground etching on zinc plate; on copper printing paper

Image size: 9 ¾ x 12 inches (24.8 x 30.5 cm)

Paper size: 20 7/8 x 31 inches (53 x 78.7 cm)

Framed dimensions: 24 13/16 x 36 ½ inches (63 x 92.7 cm)



5.

*Ohr (Ear)*, 1964

num.: 5/20

sign./dat.: Baselitz 64

Etching and soft-ground etching on zinc plate; on copper printing paper

Image size: 9  $\frac{5}{8}$  x 12  $\frac{1}{4}$  inches (24.4 x 31.1 cm)

Paper size: 15  $\frac{1}{2}$  x 20  $\frac{3}{8}$  inches (39.4 x 51.8 cm)

Framed dimensions: 18  $\frac{7}{8}$  x 24  $\frac{3}{4}$  inches (47.9 x 62.9 cm)



6.

*Köpfe (Heads)*, 1964

num.: 5/20

sign./dat.: Baselitz 64

Etching and soft-ground etching on zinc plate; on copper printing paper

Image size: 11  $\frac{7}{8}$  x 9  $\frac{3}{4}$  inches (30.2 x 24.8 cm)

Paper size: 20  $\frac{1}{2}$  x 15  $\frac{3}{8}$  inches (52.1 x 39.1 cm)

Framed dimensions: 24  $\frac{3}{4}$  x 18  $\frac{7}{8}$  inches (62.9 x 47.9 cm)



5/20

Baselitz 64

7.

*Kopf (Head)*, 1964

num.: 5/20

sign./dat.: Baselitz 64

Etching and soft-ground etching on zinc plate; on copper printing paper

Image size: 9 5/8 x 12 1/4 inches (24.4 x 31.1 cm)

Paper size: 15 5/8 x 20 5/8 inches (39.7 x 52.4 cm)

Framed dimensions: 18 7/8 x 24 3/4 inches (47.9 x 62.9 cm)





8.

*Kahlschlag*, 1964

num.: 8/20

sign./dat.: Baselitz 64

Etching and soft-ground etching on zinc plate; on copper printing paper

Image size: 9  $\frac{5}{8}$  x 11  $\frac{7}{8}$  inches (24.4 x 30.2 cm)

Paper size: 15  $\frac{5}{8}$  x 20  $\frac{5}{8}$  inches (39.7 x 52.4 cm)

Framed dimensions: 18  $\frac{7}{8}$  x 24  $\frac{3}{4}$  inches (47.9 x 62.9 cm)



9.

*Pilze (Mushrooms)*, 1964

num.: 3/20

sign./dat.: G. Baselitz 64

Etching and soft-ground etching on zinc plate; on copper printing paper

Image size: 9  $\frac{5}{8}$  x 12  $\frac{7}{8}$  inches (24.4 x 32.7 cm)

Paper size: 15  $\frac{3}{8}$  x 20  $\frac{7}{8}$  inches (39.1 x 53 cm)

Framed dimensions: 18  $\frac{7}{8}$  x 24  $\frac{3}{4}$  inches (47.9 x 62.9 cm)



10. *Ohne Titel (Typ) / Grüner am Baum*, 1965  
num.: 19/20  
sign./dat.: Baselitz 66 (mistaken)  
Etching and drypoint on zinc plate; on Richard de Bas laid paper  
Image size: 12  $\frac{5}{8}$  x 9  $\frac{3}{8}$  inches (31.9 x 23.8 cm)  
Paper size: 26  $\frac{3}{8}$  x 20  $\frac{1}{16}$  inches (67 x 51 cm)  
Framed dimensions: 29 x 23  $\frac{1}{8}$  inches (73.7 x 58.7 cm)



M. Rambow 66

11. Ohne Titel (Untitled), 1965  
num.: 12/20  
sign./dat.: Baselitz 65  
Etching and drypoint etched on zinc plate; on Richard de Bas laid paper  
Image size: 12 ¼ x 9 ⅝ inches (31.1 x 24.4 cm)  
Paper size: 26 ¼ x 19 ⅞ inches (66.7 x 50.5 cm)  
Framed dimensions: 29 ⅛ x 23 ⅞ inches (73.8 x 58.7 cm)



12/20

Baselitz 65

12. Ohne Titel (Untitled), 1965  
num.: 18/20  
sign./dat.: G Baselitz 65  
Etching and drypoint on zinc plate; on copper printing paper  
Image size: 12  $\frac{3}{4}$  x 9  $\frac{5}{8}$  inches (32.4 x 24.4 cm)  
Paper size: 17  $\frac{1}{16}$  x 12  $\frac{3}{4}$  inches (43.3 x 32.4 cm)  
Framed dimensions: 24  $\frac{3}{4}$  x 18  $\frac{3}{4}$  inches (62.9 x 47.6 cm)



13. *Die Falle (The Trap)*, 1965, printed 1983  
num.: 10/10  
sign./dat.: Baselitz 65/83  
Etching and drypoint on zinc plate; on Richard de Bas laid paper  
Image size: 12 1/2 x 9 3/8 inches (31.8 x 23.7 cm)  
Paper size: 24 1/2 x 17 7/8 inches (62.2 x 45.4 cm)  
Framed dimensions: 28 5/8 x 20 3/4 inches (72.7 x 52.7 cm)



10/10

Rambow 65/83

14. *Grün - Roter*, 1966  
num.: 10/20  
sign./dat.: Baselitz 66  
Etching and drypoint on zinc plate; on Richard de Bas laid paper  
Image size: 12 ½ x 9 ⅜ inches (31.8 x 23.8 cm)  
Paper size: 26 ⅛ x 19 ⅞ inches (66.4 x 50.5 cm)  
Framed dimensions: 29 ¼ x 23 ⅛ inches (73.8 x 58.7 cm)



15. *Der Gefangene (The Prisoner)*, 1966  
num.: 3/5  
sign./dat.: Baselitz 66  
Drypoint etching and aquatint on zinc plate; on Richard de Bas laid paper  
Image size: 12 5/8 x 9 1/4 inches (32.1 x 23.5 cm)  
Paper size: 26 1/4 x 20 inches (66.7 x 50.8 cm)  
Framed dimensions: 29 x 23 1/8 inches (73.7 x 58.7 cm)



3/5

Rambow 66



16. *Partisan*, 1966  
num.: 6/10  
sign./dat.: G Baselitz 67 (mistaken)  
Etching and drypoint on zinc plate; on yellow laid paper  
Image size: 12 5/8 x 9 1/4 inches (32.1 x 23.5 cm)  
Paper size: 21 1/4 x 15 inches (54 x 38.1 cm)  
Framed dimensions: 24 3/4 x 18 7/8 inches (62.9 x 47.9 cm)



17. *Das Haus (The House)*, 1966  
num.: 4/20  
sign./dat.: Baselitz 65 (mistaken)  
Etching, drypoint and soft-ground etching on zinc plate; on copper printing paper  
Image size: 12 ¼ x 9 ½ inches (31.1 x 24.1 cm)  
Paper size: 21 ½ x 15 inches (54.6 x 38.1)  
Framed dimensions: 24 ¾ x 18 ⅞ inches (62.9 x 47.9 cm)



17a.  
*Das Haus (The House)*, 1966  
num.: 7/20  
sign./dat.: Baselitz 65 (mistaken)  
Etching, drypoint and soft-ground etching  
on zinc plate; on copper printing paper  
Image size: 12 ¼ x 9 ½ inches  
(31.1 x 24.1 cm)  
Paper size: 21 ½ x 15 inches  
(54.6 x 38.1)  
Framed dimensions: 24 ¾ x 18 ⅞ inches  
(62.9 x 47.9 cm)



18. *Hirte (Shepherd)*, 1966  
num.: 42/45  
sign./dat.: Baselitz 65 (mistaken)  
Etching and drypoint etching on zinc plate; red on copper printing paper  
Image size: 12 1/2 x 9 3/8 inches (31.6 x 23.8 cm)  
Paper size; 25 3/8 x 19 5/8 inches (64.5 x 49.8 cm)  
Framed dimensions: 29 1/16 x 23 1/16 inches (73.8 x 58.6 cm)



42/45

Baselitz 65

19. Ohne Titel (Untitled), 1966  
num.: 3/10  
sign./dat.: Baselitz 66  
Etching and drypoint on zinc plate; on Richard de Bas laid paper  
Image size: 12 5/8 x 9 1/4 inches (32.1 x 23.5 cm)  
Paper size: 26 1/4 x 19 7/8 inches (66.7 x 50.5 cm)  
Framed dimensions: 29 x 23 1/8 inches (73.7 x 58.7 cm)



20.

*Partisan*, 1966

sign./dat.: Baselitz 66

Woodcut in green/black on different papers

Image size: 14  $\frac{7}{8}$  x 12 inches (37.8 x 30.5 cm)

Paper size: 16  $\frac{1}{8}$  x 13  $\frac{7}{8}$  inches (41 x 35.2 cm)

Framed dimensions: 24  $\frac{1}{16}$  x 18  $\frac{9}{16}$  inches (62.7 x 47.1 cm)



20a.

*Partisan*, 1966

sign./dat.: Baselitz 66

Woodcut in ocher / brown on different papers

Image size: 14  $\frac{7}{8}$  x 12 inches (37.8 x 30.5 cm)

Paper size: 16  $\frac{1}{8}$  x 13  $\frac{7}{8}$  inches (41 x 35.2 cm)

Framed dimensions: 24  $\frac{1}{16}$  x 18  $\frac{9}{16}$  inches (62.7 x 47.1 cm)

20b.

*Partisan*, 1966

bez. u.l.: 2. Zustand (second state)

sign./dat. u.r.: Baselitz 66

Woodcut on factory printing paper

Image size: 14  $\frac{3}{8}$  x 11  $\frac{3}{4}$  inches (36.4 x 29.8 cm)

Paper size: 15  $\frac{1}{8}$  x 12  $\frac{5}{8}$  inches (38.4 x 32.1 cm)

Framed dimensions: 24  $\frac{3}{4}$  x 18  $\frac{3}{4}$  inches (62.9 x 47.6 cm)

20c.

*Partisan*, 1966

bez. u.l.: 2. Zustand (second state)

sign./dat. u.r.: Baselitz 66

Woodcut in black/gray blue on endpaper

Image size: 14  $\frac{3}{8}$  x 11  $\frac{3}{4}$  inches (36.4 x 29.8 cm)

Paper size: 15 x 12  $\frac{3}{4}$  inches (38.1 x 32.9 cm)

Framed dimensions: 24  $\frac{3}{4}$  x 18  $\frac{15}{16}$  inches (62.9 x 48.1 cm)



21. *Der Neue Typ (The New Type)*, 1966  
 inscription in German on lower middle  
 sign./dat.: Baselitz 66  
 Woodcut on paper  
 Image size: 16 5/8 x 13 1/2 inches (42.2 x 34.3 cm)  
 Paper size: 24 1/8 x 17 inches (61.3 x 43.2 cm)  
 Framed dimensions: 29 1/16 x 23 1/8 inches (73.8 x 58.7 cm)



21a.  
*Der Neue Typ (The New Type)*, 1966,  
 printed 1982  
 num.: 29/30  
 sign./dat.: Baselitz 66  
 Woodcut in red brown on japan paper  
 Image size: 16 1/2 x 13 1/2 inches  
 (41.9 x 34.3 cm)  
 Paper size: 34 1/4 x 22 1/8 inches  
 (87 x 56.2 cm)  
 Framed dimensions: 36 1/2 x 24 11/16 inches  
 (92.7 x 62.7 cm)



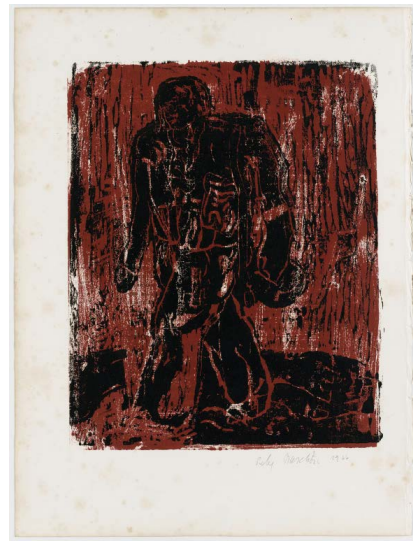
21b.  
*Der Neue Typ (The New Type)*, 1966,  
 printed 1982  
 num.: 5/30  
 sign./dat.: Baselitz 66  
 Woodcut on japan paper  
 Image size: 16 5/8 x 13 1/2 inches  
 (42.1 x 34.3 cm)  
 Paper size: 34 1/2 x 22 1/8 inches  
 (87.6 x 56.2 cm)  
 Framed dimensions: 36 1/2 x 24 15/16 inches  
 (92.7 x 63.3 cm)



22. *Der Neue Typ (The New Type)*, 1966, printed 1982  
 bez. u.l.: Probe 1 (test 1)  
 sign./dat. u.r.: G. Baselitz 66/82  
 Woodcut on old laid paper  
 Image size: 16 1/2 x 13 1/2 inches (41.9 x 34.3 cm)  
 Paper size: 17 5/8 x 14 1/4 inches (44.8 x 36.2 cm)  
 Framed dimensions: 29 x 23 1/8 inches (73.7 x 58.7 cm)



22a.  
*Der Neue Typ (The New Type)*, 1966  
 sign./dat.: Probe [test] Baselitz 66  
 Woodcut on paper  
 Image size: 16 3/8 x 13 7/8 inches  
 (42.2 x 35.2 cm)  
 Paper size: 22 3/4 x 17 1/8 inches  
 (57.8 x 43.5 cm)  
 Framed dimensions: 29 1/16 x 23 1/8 inches  
 (73.8 x 58.7 cm)



22b.  
*Der Neue Typ (The New Type)*, 1966  
 sign./dat.: Probe [test] Baselitz 1966  
 Woodcut on paper  
 Image size: 16 7/8 x 13 1/2 inches  
 (42.7 x 34.3 cm)  
 Paper size: 22 3/4 x 17 1/4 inches  
 (57.8 x 43.8 cm)  
 Framed dimensions: 29 1/16 x 23 1/8 inches  
 (73.9 x 58.7 cm)



22c.  
*Der Neue Typ (The New Type)*, 1966,  
 printed 1988  
 num.: 6/20  
 sign./dat.: G Baselitz 66/88  
 Woodcut on paper  
 Image size: 16 3/8 x 12 3/4 inches  
 (42.2 x 32.4 cm)  
 Paper size: 26 x 19 7/8 inches  
 (66 x 50.5 cm)  
 Framed dimensions: 29 1/16 x 23 1/8 inches  
 (73.8 x 58.7 cm)



23. Ohne Titel (Untitled), 1966  
sign./dat.: Baselitz 66  
Woodcut in black/brown on factory printing paper  
Image size: 11 x 11 inches (27.9 x 27.9 cm)  
Paper size: 16 x 13 ¼ inches (40.6 x 33.7 cm)  
Framed dimensions: 24 ¾ x 18 1/16 inches (62.9 x 47.5 cm)





24. Ohne Titel (Untitled), 1966, printed 1983  
num.: 5/15  
sign./dat.: G. Baselitz 66/83  
Etching, drypoint, and aquatint on zinc plate; on Rives laid paper  
Image size: 12 5/8 x 9 1/4 inches (31.9 x 23.5 cm)  
Paper size: 24 5/8 x 17 1/2 inches (62.5 x 44.5 cm)  
Framed dimensions: 28 5/8 x 20 3/4 inches (72.7 x 52.7 cm)



5/15

G. Baselitz 66/83

25. Ohne Titel (Untitled), 1966, printed 1983  
num.: 2/30  
sign./dat. u.r.: Baselitz 66/83  
Woodcut on japan paper (Richard de Bas)  
Image size: 16 5/8 x 12 7/8 inches (42.2 x 32.7 cm)  
Paper size: 25 7/8 x 19 5/8 inches (65.7 x 49.8 cm)  
Framed dimensions: 29 x 23 1/8 inches (73.7 x 58.7 cm)



26. *Torso*, 1966, printed 1988  
num.: 1/12  
sign./dat.: G. Baselitz 66/88  
Woodcut on paper  
Image size: 19 ¾ x 16 ¼ inches (50.2 x 41.3 cm)  
Paper size: 25 ⅞ x 19 ¾ inches (65.7 x 50.2 cm)  
Framed dimensions: 32 ½ x 24 ½ inches (82.6 x 62.2 cm)



27. Ohne Titel (Untitled), 1967  
 bez. u.l.: 3. Zustand Auflage 20 (3rd state Edition 20)  
 bez. rücks. o.: 3. Zustand - Auflage 20  
 monogr./dat. rücks. o.: G B 67  
 sign./dat. u.r.: Baselitz 67  
 Woodcut in black / gray-olive / red-brown on endpaper  
 Image size: 14 1/8 x 11 7/8 inches (35.9 x 30 cm)  
 Paper size: 16 x 12 13/16 inches (40.6 x 32.5 cm)  
 Framed dimensions: 24 3/4 x 18 3/4 inches (62.8 x 47.6 cm)



- 27a.  
 Ohne Titel (Untitled), 1967  
 num. u.m.: 4/4  
 monogr. u.r.: Baselitz 67 1. Zustand (first state)  
 Woodcut in light brown / purple / black  
 on endpaper  
 Image size: 14 1/8 x 11 3/4 inches  
 (35.9 x 29.8 cm)  
 Paper size: 15 1/4 x 12 1/4 inches  
 (38.7 x 31.1 cm)  
 Framed dimensions: 24 3/4 x 18 3/4 inches  
 (62.9 x 47.6 cm)



28. *Zwei Soldaten (Two Soldiers)*, 1967  
num.: 10/10  
sign./dat.: Baselitz 66 (mistaken)  
Etching and drypoint on zinc plate; on Richard de Bas laid paper  
Image size: 12 ½ x 9 ⅜ inches (31.8 x 23.8 cm)  
Paper size: 26 x 19 ⅞ inches (66 x 50.5 cm)  
Framed dimensions: 29 x 23 ⅛ inches (73.7 x 58.7 cm)



10/10

Baselitz 66

29. Ohne Titel (Untitled), 1967  
num.: 21/75  
sign./dat.: Baselitz  
Etching and drypoint on copper plate; red on copper printing paper  
Image size: 9 ½ x 13 inches (24.1 x 33 cm)  
Paper size: 18 ⅛ x 12 7/16 inches (46 x 31.6 cm)  
Framed dimensions: 24 ¾ x 18 13/16 inches (62.9 x 47.8 cm)



30. *Der Jäger (The Hunter)*, 1967

sign./dat. u.r.: Baselitz 67

Etching and drypoint on zinc plate; on copper printing paper

Image size: 12  $\frac{3}{8}$  x 9  $\frac{1}{4}$  inches (31.4 x 23.5 cm)

Paper size: 26  $\frac{3}{8}$  x 20  $\frac{1}{8}$  inches (67 x 51.1 cm)

Framed dimensions: 29  $\frac{1}{16}$  x 23  $\frac{1}{8}$  inches (73.8 x 58.7 cm)



Baselitz 67

31. *Der Jäger (The Hunter)*, 1967  
num.: 22/40  
sign./dat.: Baselitz 67  
Etching and drypoint on zinc plate; red on copper printing paper  
Image size: 12  $\frac{3}{8}$  x 9  $\frac{3}{8}$  inches (31.4 x 23.8 cm)  
Paper size: 25  $\frac{3}{8}$  x 19  $\frac{1}{16}$  inches (64.5 x 49.7 cm)  
Framed dimensions: 29  $\frac{1}{16}$  x 23  $\frac{1}{8}$  inches (73.8 x 58.7 cm)



22/40

Baselitz 67



32. *Paranoiamarsch (Paranoia March)*, 1967  
num.: 13/20  
sign./dat.: Baselitz 68  
Drypoint on zinc plate; on paper  
Image size: 12  $\frac{3}{8}$  x 9  $\frac{3}{8}$  inches (31.4 x 23.8 cm)  
Paper size: 26  $\frac{1}{4}$  x 20 inches (66.7 x 50.8 cm)  
Framed dimensions: 29 x 23  $\frac{1}{8}$  inches (73.7 x 58.7 cm)



33. *Ohne Titel (Untitled) / (Mit Hund und Axt) (With Dog and Ax)*, 1967  
sign./dat. u.r.: Baselitz 67  
Drypoint and etching on copper plate; on copper printing paper  
Image size: 13 x 9 ½ inches (33 x 24.1 cm)  
Paper size: 26 ¾ x 20 ⅛ inches (67 x 51.1 cm)  
Framed dimensions: 29 x 23 ⅛ inches (73.7 x 58.7 cm)



Baselitz 67

34.

*Beatrice*, 1969

num.: 2/10

sign./dat.: G. Baselitz 68 (mistaken)

Etching and drypoint on zinc plate; on yellow laid paper

Image size: 12 x 9  $\frac{3}{8}$  inches (30.5 x 23.8 cm)

Paper size: 21  $\frac{1}{4}$  x 15 inches (54 x 38.1 cm)

Framed dimensions: 28  $\frac{5}{8}$  x 20  $\frac{3}{4}$  inches (72.7 x 52.7 cm)



2/10

G. Baselitz 68

35. *Hochstein, 1969*  
num.: 12/20  
sign./dat.: Baselitz 69  
Drypoint on zinc plate; on Richard de Bas laid paper  
Image size: 12 ½ x 9 ¾ inches (31.8 x 23.8 cm)  
Paper size: 26 ¾ x 20 ¼ inches (67 x 51.1 cm)  
Framed dimensions: 29 x 23 ½ inches (73.7 x 58.7 cm)



12/20

Baselitz 69

36. *Eine Kuh abwärts* (*A Cow down*), 1969  
num.: 16/20  
sign./dat.: Baselitz 69  
Etching on copper plate; on yellow laid paper  
Image size: 7 x 9 ¾ inches (17.8 x 24.8 cm)  
Paper size: 12 7/16 x 16 ½ inches (31.6 x 41.9 cm)



37. *Ohne Titel (Untitled) / (nach Wrubel) (after Wrubel)*, 1969, printed 1974  
num.: 19/20  
sign./dat.: Baselitz 63/68 (mistaken)  
Drypoint and etching on zinc plate; on Richard de Bas laid paper  
Image size: 12 ½ x 9 ⅜ inches (31.8 x 23.8 cm)  
Paper size: 26 ⅛ x 20 inches (66.4 x 50.8 cm)  
Framed dimensions: 29 x 23 ⅛ inches (73.7 x 58.7 cm)



7/12

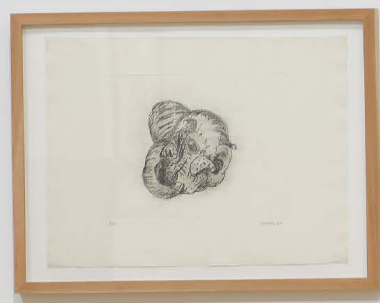
Baselitz 63/68





















1. Ohne Titel (Untitled), 1964\*  
bez. u.l.: Probedruck von der unbeschnittenen Platte, 2. Zustand, 1. Probe  
sign./dat. u.r.: 64 Wolfsburg G Baselitz  
[inscriptions bottom left: test print of the uncut plate, 2nd state, 1st test  
sign./dat. bottom right: 64 Wolfsburg G Baselitz]  
Etching and soft-ground etching on zinc plate; on paper  
Image size: 11 x 9  $\frac{5}{8}$  inches (27.9 x 24.4 cm)  
Paper size: 31 x 20  $\frac{5}{8}$  inches (78.7 x 52.7 cm)  
Framed dimensions: 36  $\frac{1}{2}$  x 24  $\frac{3}{4}$  inches (92.7 x 62.9 cm)
- 1a. Ohne Titel (Untitled), 1964\*  
num.: 3/20  
sign./dat.: Baselitz 64  
Etching and soft-ground etching on zinc plate; on copper printing paper  
Image size: 7  $\frac{1}{4}$  x 9  $\frac{5}{8}$  inches (18.4 x 24.4 cm)  
Paper size: 20  $\frac{5}{8}$  x 15  $\frac{5}{8}$  inches (52.4 x 39.7 cm)  
Framed dimensions: 24  $\frac{3}{4}$  x 18  $\frac{13}{16}$  inches (62.9 x 47.8 cm)
2. *Idol*, 1964\*  
num: 16/20  
sign./dat.: Baselitz 64  
Etching and soft-ground etching on zinc plate; on paper  
Image size: 12 x 9  $\frac{7}{8}$  inches (30.5 x 25.1 cm)  
Paper size: 26  $\frac{1}{4}$  x 20 inches (66.7 x 50.8 cm)  
Framed dimensions: 29  $\frac{1}{16}$  x 23  $\frac{1}{8}$  inches (73.8 x 58.7 cm)
- 2a. *Idol*, 1964\*  
num.: 7/20  
sign./dat.: G. Baselitz 64  
Etching and soft-ground etching on zinc plate; on copper printing paper  
Image size: 11  $\frac{7}{8}$  x 9  $\frac{7}{8}$  inches (30.2 x 25.1 cm)  
Paper size: 21 x 15  $\frac{1}{4}$  inches (53.3 x 38.7 cm)  
Framed dimensions: 24  $\frac{11}{16}$  x 18  $\frac{13}{16}$  inches (62.7 x 47.8 cm)
3. *Hund (Dog)*, 1964\*  
num: 9/20  
sign./dat.: Baselitz 64  
Etching and soft-ground etching on zinc plate; on copper printing paper  
Image size: 9  $\frac{5}{8}$  x 12  $\frac{1}{4}$  inches (24.4 x 31.1 cm)  
Paper size: 15  $\frac{3}{8}$  x 22  $\frac{7}{8}$  inches (39 x 58.1 cm)  
Framed dimensions: 18  $\frac{13}{16}$  x 24  $\frac{13}{16}$  inches (47.8 x 63 cm)
4. *Heulende Hunde (Howling Dogs)*, 1964\*  
num.: 11/20  
sign./dat.: Baselitz 64  
Etching and soft-ground etching on zinc plate; on copper printing paper  
Image size: 9  $\frac{3}{4}$  x 12 inches (24.8 x 30.5 cm)  
Paper size: 20  $\frac{7}{8}$  x 31 inches (53 x 78.7 cm)  
Framed dimensions: 24  $\frac{13}{16}$  x 36  $\frac{1}{2}$  inches (63 x 92.7 cm)
5. *Ohr (Ear)*, 1964\*  
num.: 5/20  
sign./dat.: Baselitz 64  
Etching and soft-ground etching on zinc plate; on copper printing paper  
Image size: 9  $\frac{5}{8}$  x 12  $\frac{1}{4}$  inches (24.4 x 31.1 cm)  
Paper size: 15  $\frac{1}{2}$  x 20  $\frac{3}{8}$  inches (39.4 x 51.8 cm)  
Framed dimensions: 18  $\frac{7}{8}$  x 24  $\frac{3}{4}$  inches (47.9 x 62.9 cm)

6. *Köpfe (Heads)*, 1964\*  
num.: 5/20  
sign./dat.: Baselitz 64  
Etching and soft-ground etching on zinc plate; on copper printing paper  
Image size: 11  $\frac{7}{8}$  x 9  $\frac{3}{4}$  inches (30.2 x 24.8 cm)  
Paper size: 20  $\frac{1}{2}$  x 15  $\frac{3}{8}$  inches (52.1 x 39.1 cm)  
Framed dimensions: 24  $\frac{3}{4}$  x 18  $\frac{7}{8}$  inches (62.9 x 47.9 cm)
7. *Kopf (Head)*, 1964\*  
num.: 5/20  
sign./dat.: Baselitz 64  
Etching and soft-ground etching on zinc plate; on copper printing paper  
Image size: 9  $\frac{5}{8}$  x 12  $\frac{1}{4}$  inches (24.4 x 31.1 cm)  
Paper size: 15  $\frac{5}{8}$  x 20  $\frac{5}{8}$  inches (39.7 x 52.4 cm)  
Framed dimensions: 18  $\frac{7}{8}$  x 24  $\frac{3}{4}$  inches (47.9 x 62.9 cm)
8. *Kahlschlag*, 1964\*  
num.: 8/20  
sign./dat.: Baselitz 64  
Etching and soft-ground etching on zinc plate; on copper printing paper  
Image size: 9  $\frac{5}{8}$  x 11  $\frac{7}{8}$  inches (24.4 x 30.2 cm)  
Paper size: 15  $\frac{5}{8}$  x 20  $\frac{5}{8}$  inches (39.7 x 52.4 cm)  
Framed dimensions: 18  $\frac{7}{8}$  x 24  $\frac{3}{4}$  inches (47.9 x 62.9 cm)
9. *Pilze (Mushrooms)*, 1964\*  
num.: 3/20  
sign./dat.: G. Baselitz 64  
Etching and soft-ground etching on zinc plate; on copper printing paper  
Image size: 9  $\frac{5}{8}$  x 12  $\frac{7}{8}$  inches (24.4 x 32.7 cm)  
Paper size: 15  $\frac{3}{8}$  x 20  $\frac{7}{8}$  inches (39.1 x 53 cm)  
Framed dimensions: 18  $\frac{7}{8}$  x 24  $\frac{3}{4}$  inches (47.9 x 62.9 cm)
10. *Ohne Titel (Typ) / Grüner am Baum*, 1965\*  
num.: 19/20  
sign./dat.: Baselitz 66 (mistaken)  
Etching and drypoint on zinc plate; on Richard de Bas laid paper  
Image size: 12  $\frac{5}{8}$  x 9  $\frac{3}{8}$  inches (31.9 x 23.8 cm)  
Paper size: 26  $\frac{3}{8}$  x 20  $\frac{1}{16}$  inches (67 x 51 cm)  
Framed dimensions: 29 x 23  $\frac{1}{8}$  inches (73.7 x 58.7 cm)
11. *Ohne Titel (Untitled)*, 1965\*  
num.: 12/20  
sign./dat.: Baselitz 65  
Etching and drypoint etched on zinc plate; on Richard de Bas laid paper  
Image size: 12  $\frac{1}{4}$  x 9  $\frac{5}{8}$  inches (31.1 x 24.4 cm)  
Paper size: 26  $\frac{1}{4}$  x 19  $\frac{7}{8}$  inches (66.7 x 50.5 cm)  
Framed dimensions: 29  $\frac{1}{16}$  x 23  $\frac{1}{8}$  inches (73.8 x 58.7 cm)
12. *Ohne Titel (Untitled)*, 1965\*  
num.: 18/20  
sign./dat.: G Baselitz 65  
Etching and drypoint on zinc plate; on copper printing paper  
Image size: 12  $\frac{3}{4}$  x 9  $\frac{5}{8}$  inches (32.4 x 24.4 cm)  
Paper size: 17  $\frac{1}{16}$  x 12  $\frac{3}{4}$  inches (43.3 x 32.4 cm)  
Framed dimensions: 24  $\frac{3}{4}$  x 18  $\frac{3}{4}$  inches (62.9 x 47.6 cm)
13. *Die Falle (The Trap)*, 1965, printed 1983\*  
num.: 10/10  
sign./dat.: Baselitz 65/83  
Etching and drypoint on zinc plate; on Richard de Bas laid paper  
Image size: 12  $\frac{1}{2}$  x 9  $\frac{3}{8}$  inches (31.8 x 23.7 cm)  
Paper size: 24  $\frac{1}{2}$  x 17  $\frac{7}{8}$  inches (62.2 x 45.4 cm)  
Framed dimensions: 28  $\frac{5}{8}$  x 20  $\frac{3}{4}$  inches (72.7 x 52.7 cm)
14. *Grün - Roter*, 1966\*  
num.: 10/20  
sign./dat.: Baselitz 66  
Etching and drypoint on zinc plate; on Richard de Bas laid paper  
Image size: 12  $\frac{1}{2}$  x 9  $\frac{3}{8}$  inches (31.8 x 23.8 cm)  
Paper size: 26  $\frac{1}{8}$  x 19  $\frac{7}{8}$  inches (66.4 x 50.5 cm)  
Framed dimensions: 29  $\frac{1}{16}$  x 23  $\frac{1}{8}$  inches (73.8 x 58.7 cm)
15. *Der Gefangene (The Prisoner)*, 1966\*  
num.: 3/5  
sign./dat.: Baselitz 66  
Drypoint etching and aquatint on zinc plate; on Richard de Bas laid paper  
Image size: 12  $\frac{5}{8}$  x 9  $\frac{1}{4}$  inches (32.1 x 23.5 cm)  
Paper size: 26  $\frac{1}{4}$  x 20 inches (66.7 x 50.8 cm)  
Framed dimensions: 29 x 23  $\frac{1}{8}$  inches (73.7 x 58.7 cm)
16. *Partisan*, 1966\*  
num.: 6/10  
sign./dat.: G Baselitz 67 (mistaken)  
Etching and drypoint on zinc plate; on yellow laid paper  
Image size: 12  $\frac{5}{8}$  x 9  $\frac{1}{4}$  inches (32.1 x 23.5 cm)  
Paper size: 21  $\frac{1}{4}$  x 15 inches (54 x 38.1 cm)  
Framed dimensions: 24  $\frac{3}{4}$  x 18  $\frac{7}{8}$  inches (62.9 x 47.9 cm)
17. *Das Haus (The House)*, 1966\*  
num.: 4/20  
sign./dat.: Baselitz 65 (mistaken)  
Etching, drypoint and soft-ground etching on zinc plate; on copper printing paper  
Image size: 12  $\frac{1}{4}$  x 9  $\frac{1}{2}$  inches (31.1 x 24.1 cm)  
Paper size: 21  $\frac{1}{2}$  x 15 inches (54.6 x 38.1 cm)  
Framed dimensions: 24  $\frac{3}{4}$  x 18  $\frac{7}{8}$  inches (62.9 x 47.9 cm)
- 17a. *Das Haus (The House)*, 1966\*  
num.: 7/20  
sign./dat.: Baselitz 65 (mistaken)  
Etching, drypoint and soft-ground etching on zinc plate; on copper printing paper  
Image size: 12  $\frac{1}{4}$  x 9  $\frac{1}{2}$  inches (31.1 x 24.1 cm)  
Paper size: 21  $\frac{1}{2}$  x 15 inches (54.6 x 38.1 cm)  
Framed dimensions: 24  $\frac{3}{4}$  x 18  $\frac{7}{8}$  inches (62.9 x 47.9 cm)
18. *Hirte (Shepherd)*, 1966\*  
num.: 42/45  
sign./dat.: Baselitz 65 (mistaken)  
Etching and drypoint etching on zinc plate; red on copper printing paper  
Image size: 12  $\frac{1}{2}$  x 9  $\frac{3}{8}$  inches (31.6 x 23.8 cm)  
Paper size: 25  $\frac{3}{8}$  x 19  $\frac{5}{8}$  inches (64.5 x 49.8 cm)  
Framed dimensions: 29  $\frac{1}{16}$  x 23  $\frac{1}{16}$  inches (73.8 x 58.6 cm)
19. *Ohne Titel (Untitled)*, 1966\*  
num.: 3/10  
sign./dat.: Baselitz 66  
Etching and drypoint on zinc plate; on Richard de Bas laid paper  
Image size: 12  $\frac{5}{8}$  x 9  $\frac{1}{4}$  inches (32.1 x 23.5 cm)  
Paper size: 26  $\frac{1}{4}$  x 19  $\frac{7}{8}$  inches (66.7 x 50.5 cm)  
Framed dimensions: 29 x 23  $\frac{1}{8}$  inches (73.7 x 58.7 cm)
20. *Partisan*, 1966\*  
sign./dat.: Baselitz 66  
Woodcut in green/black on different papers  
Image size: 14  $\frac{7}{8}$  x 12 inches (37.8 x 30.5 cm)  
Paper size: 16  $\frac{1}{8}$  x 13  $\frac{7}{8}$  inches (41 x 35.2 cm)  
Framed dimensions: 24  $\frac{1}{16}$  x 18  $\frac{9}{16}$  inches (62.7 x 47.1 cm)



- 20a. *Partisan*, 1966  
sign./dat.: Baselitz 66  
Woodcut in ocher/brown on different papers  
Image size: 14  $\frac{7}{8}$  x 12 inches (37.8 x 30.5 cm)  
Paper size: 16  $\frac{1}{8}$  x 13  $\frac{7}{8}$  inches (41 x 35.2 cm)  
Framed dimensions: 24  $\frac{1}{16}$  x 18  $\frac{9}{16}$  inches (62.7 x 47.1 cm)
- 20b. *Partisan*, 1966\*  
bez. u.l.: 2. Zustand (second state)  
sign./dat. u.r.: Baselitz 66  
Woodcut on factory printing paper  
Image size: 14  $\frac{3}{8}$  x 11  $\frac{3}{4}$  inches (36.4 x 29.8 cm)  
Paper size: 15  $\frac{1}{8}$  x 12  $\frac{5}{8}$  inches (38.4 x 32.1 cm)  
Framed dimensions: 24  $\frac{3}{4}$  x 18  $\frac{3}{4}$  inches (62.9 x 47.6 cm)
- 20c. *Partisan*, 1966\*  
bez. u.l.: 2. Zustand (second state)  
sign./dat. u.r.: Baselitz 66  
Woodcut in black/gray blue on endpaper  
Image size: 14  $\frac{3}{8}$  x 11  $\frac{3}{4}$  inches (36.4 x 29.8 cm)  
Paper size: 15 x 12  $\frac{3}{4}$  inches (38.1 x 32.9 cm)  
Framed dimensions: 24  $\frac{3}{4}$  x 18  $\frac{15}{16}$  inches (62.9 x 48.1 cm)
21. *Der Neue Typ (The New Type)*, 1966\*  
inscription in German on lower middle  
sign./dat.: Baselitz 66  
Woodcut on paper  
Image size: 16  $\frac{5}{8}$  x 13  $\frac{1}{2}$  inches (42.2 x 34.3 cm)  
Paper size: 24  $\frac{1}{8}$  x 17 inches (61.3 x 43.2 cm)  
Framed dimensions: 29  $\frac{1}{16}$  x 23  $\frac{1}{8}$  inches (73.8 x 58.7 cm)
- 21a. *Der Neue Typ (The New Type)*, 1966, printed 1982  
num.: 29/30  
sign./dat.: Baselitz 66  
Woodcut in red brown on japan paper  
Image size: 16  $\frac{1}{2}$  x 13  $\frac{1}{2}$  inches (41.9 x 34.3 cm)  
Paper size: 34  $\frac{1}{4}$  x 22  $\frac{1}{8}$  inches (87 x 56.2 cm)  
Framed dimensions: 36  $\frac{1}{2}$  x 24  $\frac{1}{16}$  inches (92.7 x 62.7 cm)
- 21b. *Der Neue Typ (The New Type)*, 1966, printed 1982  
num.: 5/30  
sign./dat.: Baselitz 66  
Woodcut on japan paper  
Image size: 16  $\frac{5}{8}$  x 13  $\frac{1}{2}$  inches (42.1 x 34.3 cm)  
Paper size: 34  $\frac{1}{2}$  x 22  $\frac{1}{8}$  inches (87.6 x 56.2 cm)  
Framed dimensions: 36  $\frac{1}{2}$  x 24  $\frac{15}{16}$  inches (92.7 x 63.3 cm)
22. *Der Neue Typ (The New Type)*, 1966, printed 1982\*  
bez. u.l.: Probe 1 (test 1)  
sign./dat. u.r.: G. Baselitz 66/82  
Woodcut on old laid paper  
Image size: 16  $\frac{1}{2}$  x 13  $\frac{1}{2}$  inches (41.9 x 34.3 cm)  
Paper size: 17  $\frac{5}{8}$  x 14  $\frac{1}{4}$  inches (44.8 x 36.2 cm)  
Framed dimensions: 29 x 23  $\frac{1}{8}$  inches (73.7 x 58.7 cm)
- 22a. *Der Neue Typ (The New Type)*, 1966\*  
sign./dat.: Probe [test] Baselitz 66  
Woodcut on paper  
Image size: 16  $\frac{5}{8}$  x 13  $\frac{7}{8}$  inches (42.2 x 35.2 cm)  
Paper size: 22  $\frac{3}{4}$  x 17  $\frac{1}{8}$  inches (57.8 x 43.5 cm)  
Framed dimensions: 29  $\frac{1}{16}$  x 23  $\frac{1}{8}$  inches (73.8 x 58.7 cm)
- 22b. *Der Neue Typ (The New Type)*, 1966\*  
sign./dat.: Probe [test] Baselitz 1966  
Woodcut on paper  
Image size: 16  $\frac{7}{8}$  x 13  $\frac{1}{2}$  inches (42.7 x 34.3 cm)  
Paper size: 22  $\frac{3}{4}$  x 17  $\frac{1}{4}$  inches (57.8 x 43.8 cm)  
Framed dimensions: 29  $\frac{1}{16}$  x 23  $\frac{1}{8}$  inches (73.9 x 58.7 cm)
- 22c. *Der Neue Typ (The New Type)*, 1966, printed 1988  
num.: 6/20  
sign./dat.: G. Baselitz 66/88  
Woodcut on paper  
Image size: 16  $\frac{5}{8}$  x 12  $\frac{3}{4}$  inches (42.2 x 32.4 cm)  
Paper size: 26 x 19  $\frac{7}{8}$  inches (66 x 50.5 cm)  
Framed dimensions: 29  $\frac{1}{16}$  x 23  $\frac{1}{8}$  inches (73.8 x 58.7 cm)
23. Ohne Titel (Untitled), 1966\*  
sign./dat.: Baselitz 66  
Woodcut in black/brown on factory printing paper  
Image size: 11 x 11 inches (27.9 x 27.9 cm)  
Paper size: 16 x 13  $\frac{1}{4}$  inches (40.6 x 33.7 cm)  
Framed dimensions: 24  $\frac{3}{4}$  x 18  $\frac{1}{16}$  inches (62.9 x 47.5 cm)
24. Ohne Titel (Untitled), 1966, printed 1983\*  
num.: 5/15  
sign./dat.: G. Baselitz 66/83  
Etching, drypoint, and aquatint on zinc plate; on Rives laid paper  
Image size: 12  $\frac{5}{8}$  x 9  $\frac{1}{4}$  inches (31.9 x 23.5 cm)  
Paper size: 24  $\frac{5}{8}$  x 17  $\frac{1}{2}$  inches (62.5 x 44.5 cm)  
Framed dimensions: 28  $\frac{5}{8}$  x 20  $\frac{3}{4}$  inches (72.7 x 52.7 cm)
25. Ohne Titel (Untitled), 1966, printed 1983\*  
num.: 2/30  
sign./dat. u.r.: Baselitz 66/83  
Woodcut on japan paper (Richard de Bas)  
Image size: 16  $\frac{5}{8}$  x 12  $\frac{7}{8}$  inches (42.2 x 32.7 cm)  
Paper size: 25  $\frac{7}{8}$  x 19  $\frac{5}{8}$  inches (65.7 x 49.8 cm)  
Framed dimensions: 29 x 23  $\frac{1}{8}$  inches (73.7 x 58.7 cm)
26. *Torso*, 1966, printed 1988\*  
num.: 1/12  
sign./dat.: G. Baselitz 66/88  
Woodcut on paper  
Image size: 19  $\frac{3}{4}$  x 16  $\frac{1}{4}$  inches (50.2 x 41.3 cm)  
Paper size: 25  $\frac{7}{8}$  x 19  $\frac{3}{4}$  inches (65.7 x 50.2 cm)  
Framed dimensions: 32  $\frac{1}{2}$  x 24  $\frac{1}{2}$  inches (82.6 x 62.2 cm)
27. Ohne Titel (Untitled), 1967\*  
bez. u.l.: 3. Zustand Auflage 20 (3rd state Edition 20)  
bez. rücks. o.: 3. Zustand - Auflage 20  
monogr./dat. rücks. o.: G B 67  
sign./dat. u.r.: Baselitz 67  
Woodcut in black / gray-olive / red-brown on endpaper  
Image size: 14  $\frac{1}{8}$  x 11  $\frac{7}{8}$  inches (35.9 x 30 cm)  
Paper size: 16 x 12  $\frac{13}{16}$  inches (40.6 x 32.5 cm)  
Framed dimensions: 24  $\frac{3}{4}$  x 18  $\frac{3}{4}$  inches (62.8 x 47.6 cm)
- 27a. Ohne Titel (Untitled), 1967\*  
num. u.m.: 4/4  
monogr. u.r.: Baselitz 67 1. Zustand (first state)  
Woodcut in light brown / purple / black on endpaper  
Image size: 14  $\frac{1}{8}$  x 11  $\frac{3}{4}$  inches (35.9 x 29.8 cm)  
Paper size: 15  $\frac{1}{4}$  x 12  $\frac{1}{4}$  inches (38.7 x 31.1 cm)  
Framed dimensions: 24  $\frac{3}{4}$  x 18  $\frac{3}{4}$  inches (62.9 x 47.6 cm)

28. *Zwei Soldaten (Two Soldiers)*, 1967\*  
num.: 10/10  
sign./dat.: Baselitz 66 (mistaken)  
Etching and drypoint on zinc plate; on Richard de Bas laid paper  
Image size: 12 ½ x 9 ¾ inches (31.8 x 23.8 cm)  
Paper size: 26 x 19 ⅞ inches (66 x 50.5 cm)  
Framed dimensions: 29 x 23 ⅛ inches (73.7 x 58.7 cm)
29. *Ohne Titel (Untitled)*, 1967\*  
num.: 21/75  
sign./dat.: Baselitz  
Etching and drypoint on copper plate; red on copper printing paper  
Image size: 9 ½ x 13 inches (24.1 x 33 cm)  
Paper size: 18 ⅛ x 12 ⅞ inches (46 x 31.6 cm)  
Framed dimensions: 24 ¾ x 18 1⅞ inches (62.9 x 47.8 cm)
30. *Der Jäger (The Hunter)*, 1967\*  
sign./dat. u.r.: Baselitz 67  
Etching and drypoint on zinc plate; on copper printing paper  
Image size: 12 ⅜ x 9 ¼ inches (31.4 x 23.5 cm)  
Paper size: 26 ⅜ x 20 ⅛ inches (67 x 51.1 cm)  
Framed dimensions: 29 ⅛ x 23 ⅛ inches (73.8 x 58.7 cm)
31. *Der Jäger (The Hunter)*, 1967\*  
num.: 22/40  
sign./dat.: Baselitz 67  
Etching and drypoint on zinc plate; red on copper printing paper  
Image size: 12 ⅜ x 9 ¾ inches (31.4 x 23.8 cm)  
Paper size: 25 ⅜ x 19 ⅞ inches (64.5 x 49.7 cm)  
Framed dimensions: 29 ⅛ x 23 ⅛ inches (73.8 x 58.7 cm)
32. *Paranoiamarsch (Paranoia March)*, 1967\*  
num.: 13/20  
sign./dat.: Baselitz 68  
Drypoint on zinc plate; on paper  
Image size: 12 ⅜ x 9 ¾ inches (31.4 x 23.8 cm)  
Paper size: 26 ¼ x 20 inches (66.7 x 50.8 cm)  
Framed dimensions: 29 x 23 ⅛ inches (73.7 x 58.7 cm)
33. *Ohne Titel (Untitled) / (Mit Hund und Axt) (With Dog and Ax)*, 1967\*  
sign./dat. u.r.: Baselitz 67  
Drypoint and etching on copper plate; on copper printing paper  
Image size: 13 x 9 ½ inches (33 x 24.1 cm)  
Paper size: 26 ⅜ x 20 ⅛ inches (67 x 51.1 cm)  
Framed dimensions: 29 x 23 ⅛ inches (73.7 x 58.7 cm)
34. *Beatrice*, 1969\*  
num.: 2/10  
sign./dat.: G. Baselitz 68 (mistaken)  
Etching and drypoint on zinc plate; on yellow laid paper  
Image size: 12 x 9 ¾ inches (30.5 x 23.8 cm)  
Paper size: 21 ¼ x 15 inches (54 x 38.1 cm)  
Framed dimensions: 28 ⅝ x 20 ¾ inches (72.7 x 52.7 cm)
35. *Hochstein*, 1969  
num.: 12/20  
sign./dat.: Baselitz 69  
Drypoint on zinc plate; on Richard de Bas laid paper  
Image size: 12 ½ x 9 ¾ inches (31.8 x 23.8 cm)  
Paper size: 26 ⅜ x 20 ⅛ inches (67 x 51.1 cm)  
Framed dimensions: 29 x 23 ⅛ inches (73.7 x 58.7 cm)
36. *Eine Kuh abwärts (A Cow down)*, 1969  
num.: 16/20  
sign./dat.: Baselitz 69  
Etching on copper plate; on yellow laid paper  
Image size: 7 x 9 ¾ inches (17.8 x 24.8 cm)  
Paper size: 12 ⅞ x 16 ½ inches (31.6 x 41.9 cm)
37. *Ohne Titel (Untitled) / (nach Wrubel) (after Wrubel)*, 1969, printed 1974  
num.: 19/20  
sign./dat.: Baselitz 63/68 (mistaken)  
Drypoint and etching on zinc plate; on Richard de Bas laid paper  
Image size: 12 ½ x 9 ¾ inches (31.8 x 23.8 cm)  
Paper size: 26 ⅛ x 20 inches (66.4 x 50.8 cm)  
Framed dimensions: 29 x 23 ⅛ inches (73.7 x 58.7 cm)

\*Indicates an exhibited work

This catalog is presented on the occasion of the exhibition  
*Georg Baselitz: Prints from the 1960s*  
Luhring Augustine Tribeca, 17 White Street, New York  
October 15–December 23, 2021

Published in 2021 by  
Luhring Augustine  
531 West 24<sup>th</sup> Street  
New York, New York 10011  
USA  
+1 212 206 9100  
luhringaugustine.com

All rights reserved. No part of this book may be  
reproduced or transmitted in any form or by any means,  
electronic or mechanical, including photocopy, recording,  
or any other information storage and retrieval system, or  
otherwise without written permission from the publisher.

Artwork photography © bernhardstrauss.com  
Installation photography © Farzad Owrang

Publication © 2021 Luhring Augustine

All artworks © 2021 Georg Baselitz