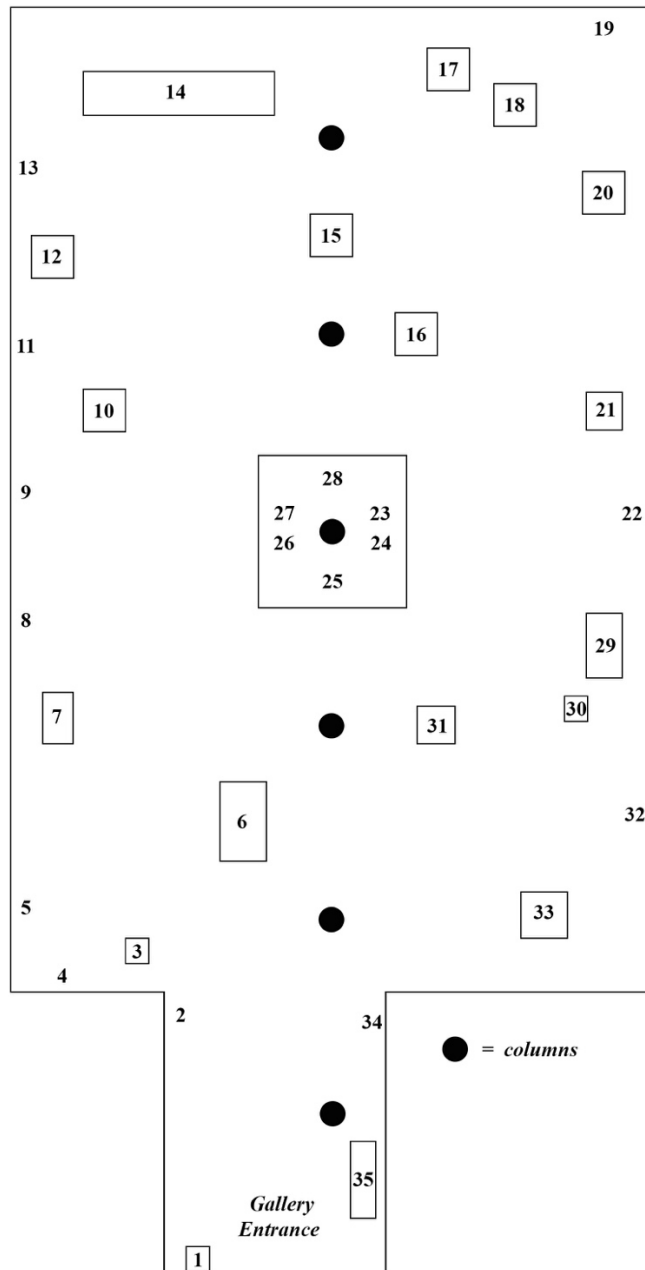


LUHRING AUGUSTINE TRIBECA

17 White Street
New York NY 10013
tel 646 960 7540
www.luhringaugustine.com

Treasures of the Medieval World
In conjunction with Sam Fogg
Luhring Augustine Tribeca
January 31 – March 8, 2025



LUHRING AUGUSTINE TRIBECA

17 White Street
New York NY 10013
tel 646 960 7540
www.luhringaugustine.com

Entryway



1. *Gargoyle representing a dog-human hybrid, c. 1300-1350*
Southern France
Limestone
25 3/8 x 9 1/2 x 7 1/4 inches
(64.5 x 24 x 18.5 cm)



2. **Maestro della Madonna di Orte (active c. 1490-1520)**
The Madonna and Child, c. 1495-1500
Italy, Viterbo
Oil, tempera, and gilding on poplar
18 1/2 x 13 3/4 x 1 inches (exc. frame)
(47 x 34.9 x 2.5 cm)
21 1/4 x 16 1/4 x 2 inches (framed)
(54 x 41.3 x 5 cm)

Main gallery from left (Please refer to diagram)



3. **Konrad Kyeser**
The Donaueschingen Bellifortis, c. 1460
Alsace or the Lake Constance area
Illustrated manuscript on paper
12 3/4 x 8 1/2 in
(33 x 21.5 cm)

LUHRING AUGUSTINE TRIBECA

17 White Street
New York NY 10013
tel 646 960 7540
www.luhringaugustine.com



4. **Niccolò di Buonaccorso (active in Siena by 1372, died 1388)**

The Virgin and Child Enthroned, c. 1380s

Italy, Siena

Tempera and gilding on poplar

10 x 7 1/4 x 3/8 inches (exc. frame)

(25.5 x 18.5 x 1 cm)

11 x 8.25 x 1 inches (framed)

28.1 x 21.1 x 2.7 cm)



5. *A predella depicting three scenes from the Passion of Christ*,

c. 1440

North-eastern Spain, Crown of Aragon

Oil, tempera, gilding and silvering on softwood panel

30 1/4 x 59 1/2 inches

(77 x 151 cm)



6. *A Knight on Horseback*, c. 1480

Northern Italy or Tyrol

Softwood with traces of polychromy

34 x 29 3/4 x 16 1/8 inches

(86.2 x 75.5 x 41 cm)



7. *A Schöne ('Beautiful') Madonna*, c. 1430

Austria, Salzburg

Softwood with large vestiges of gilding and polychromy

52 x 20 1/2 x 15 inches

(132 x 52 x 38 cm)

LUHRING AUGUSTINE TRIBECA

17 White Street
New York NY 10013
tel 646 960 7540
www.luhringaugustine.com



8. *A large Hispano-Moresque charger with briony flowers around a central armorial*, c. 1430-1470
Spain, Valencia, probably Manises
Tin-glazed earthenware
18 1/8 (diameter) x 2 1/2 (depth) inches
(46.1 x 6.5 cm)



9. **Alejo Fernández (c. 1475 - c. 1545)**
Appearance of the Risen Christ to his Mother with the Fathers of Limbo, C. 1520-1530
Spain, Seville
Oil on softwood panel
59 x 42 1/8 x 1 1/8 inches (exc. frame)
(150 x 107 x 3 cm)
69 x 52 1/4 x 3 3/4 inches (framed)
(175 x 131.2 x 9.5 cm)



10. *Saint Christopher*, c. 1350
Spain, Catalonia
Softwood with gilding and polychromy
29 7/8 x 7 1/2 x 6 1/4 inches
(76 x 19 x 16 cm)



11. **Master Felipe (The Master of the Zarzoso Triptych)**
Ecce Homo, c. 1450
Castile
Oil on softwood panel
16 3/4 x 12 1/8 x 3/8 inches (exc. frame)
(42.6 x 30.7 cm x 1 cm)
20 3/4 x 60 1/8 x 1 1/2 inches (framed)
(52.5 x 40.9 x 4 cm)

LUHRING AUGUSTINE TRIBECA

17 White Street
New York NY 10013
tel 646 960 7540
www.luhringaugustine.com



12. *George and the Dragon*, c. 1430
Austria, Tyrol
Softwood with silver and polychromy
48 3/8 x 24 x 11 inches
(123 x 61 x 28 cm)



13. **Master of the Regensburg Hostienfrel**
The Pentecost, c. 1480
Germany, Regensburg
Oil on spruce panel
43 1/4 x 37 1/4 x 3/4 inches (110.0 x 95.0 x 2cm) (exc. frame)
47 3/4 x 38 x 2 1/2 inches (121.3 x 99.2 x 5 cm) (framed)



14. *Alabaster altarpiece of the Passion*, c. 1450
England, Midlands
29 1/2 x 89 x 2 3/4 inches
(75 x 226 x 7 cm)
Alabaster with polychromy, set into modern carcass



15. *Tracery Section from the Chapter House Vestibule of York Minster*, c. 1280-1291
England, York
Limestone
28 x 27 1/8 x 14 5/8 inches
(71 x 69 x 37 cm)



16. *A gilded brass reliquary bust of a martyred female saint*,
c. 1520
Southern Germany or Switzerland
Brass with gilding and polychromy
17 1/8 x 16 7/8 x 10 inches
(43.5 x 43 x 25.5 cm)

LUHRING AUGUSTINE TRIBECA

17 White Street
New York NY 10013
tel 646 960 7540
www.luhringaugustine.com



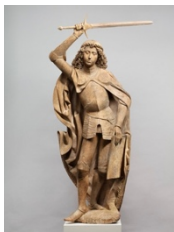
17, 18. *Christ and a Sleeping Apostle from an Agony in the Garden group*, c. 1450
Alpine Region
Terracotta
40 1/8 x 16 7/8 x 22 7/8 inches
(102 x 43 x 58 cm)



19. **Master of the Bamberg Altarpiece**
The Meeting of Anna and Joachim at the Golden Gate,
c. 1435
Germany, Nuremberg
Oil, gilding, and silver on softwood panel
42 x 23 1/8 x 5/8 inches (exc. frame)
(106.8 x 58.8 x 1.7 cm)
44 3/4 x 23 1/4 x 1 3/8 inches (framed)
(113.5 x 65 x 3.7 cm)



20. *A silver-gilt ewer with dragon-headed spout and repoussé ornament*, c. 1500-1520
Portugal
Gilded silver with inset reverse-glass painting
19 3/4 (height) x 6 3/4 (diameter) x 10 3/8 (depth including handle and spout) inches
(50.3 x 17.2 x 26.5 cm)
2 kilograms gross weight



21. *Saint George*, c. 1480-1500
Tyrol or Upper Bavaria
Limewood
58 1/2 x 22 7/8 x 12 3/4 inches (excluding modern sword)
(148.5 x 58 x 32.5 cm)

LUHRING AUGUSTINE TRIBECA

17 White Street
New York NY 10013
tel 646 960 7540
www.luhringaugustine.com



22. *The Bernheimer 'Phoenix in Octagon' rug, c. 1490-1525*
Southern Anatolia, Tekeogullari or Ramazonogullari Beylik?
Warp, weft and pile of wool with a symmetrically knotted pile
78 3/4 x 46 7/8 inches
(200 x 119 cm)



23. *An enamelled casket showing the Martyrdom of Saint Stephen, c. 1210-1220*
France, Limoges
Gilded copper alloy with champlevé enamel over oak core
7 x 5 1/8 x 2 1/4 inches
(17.8 x 13 x 5.8 cm)



24. *A micro-architectural custodia or monstrance, c. 1450, with later adaptations*
Northern Spain
Gilded silver with basse-taille enamels
17 5/8 x 9 x 6 7/8 inches
(44.7 x 22.9 x 17.5 cm)



25. *An enamelled casket showing Christ in Majesty and the Lamb of God, c. 1190-1200*
France, Limoges
Gilded copper alloy with champlevé enamel over oak core
7 7/8 x 9 x 4 inches
(20 x 22.9 x 10.3 cm)

LUHRING AUGUSTINE TRIBECA

17 White Street
New York NY 10013
tel 646 960 7540
www.luhringaugustine.com



26. *A chalice showing the four Evangelists and the arms of the von Sundhausen*, c. 1330-1350
Germany, Thuringia, Nordhausen?
Gilded silver with basse-taille enamels
The calyx replaced 5 3/4 (height) x 4 3/8 (diameter at foot)
inches
(14.5 x 11.1 cm)
Weight 307 grams



27. *A Standing Virgin and Child*, c. 1280
Strasbourg
Fruitwood
9 1/2 x 3 1/8 x 2 3/4 inches
(24 x 7.8 x 7 cm)



28. *A rock crystal processional cross*, c. 1300
Spain, Catalonia
Gilded in copper and polished rock crystal over an iron core
14 1/8 x 7 5/8 inches
(36 x 19.5 cm)
17 x 7 5/8 inches (including base)
(43 x 19.5 cm)



29. *The Virgin and Child on a Crescent Moon*, c. 1520
Germany, Bavaria
Limewood with gilding, silvering, and polychromy
41 3/8 x 22 7/8 x 10 1/4 inches
(105 x 58 x 26 cm)

LUHRING AUGUSTINE TRIBECA

17 White Street
New York NY 10013
tel 646 960 7540
www.luhringaugustine.com



30. *A massive one-handed mortar decorated with the arms of the Bishop of Salzburg, Leonhard von Keutschach, c. 1500*

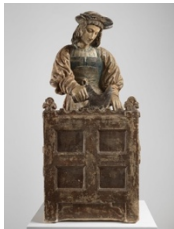
Austria

Bronze

10 1/4 x 10 1/8 (rim diameter) x 11 5/8 inches (depth including handle)

(26.1 x 25.8 x 29.6 cm)

16.3 kg



31. *Saint Crispin, c. 1520*

France, Champagne

Limestone with vestiges of polychromy

31 1/2 x 14 1/8 x 12 1/4 inches

(80 x 36 x 31 cm)



32. **Sigmund Gleismüller (active Landshut, 1474-1505),**

c. 1485-1490

Bavaria, Landshut

Oil and softwood panel (spruce or larch)

50 3/4 x 46 1/4 inches

(129 x 117.5 cm)

57 7/8 x 53 inches (framed)

(147 x 134.5 cm)



33. **Tilman Riemenschneider (Heiligenstadt, c. 1460-1531
Würzburg)**

The Seebenstein Madonna, c. 1500-1505

Germany, Franconia, Würzburg

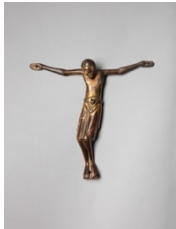
Limewood with traces of polychromy

36 x 17 3/4 x 11 3/4 inches

(91.5 x 45 x 30 cm)

LUHRING AUGUSTINE TRIBECA

17 White Street
New York NY 10013
tel 646 960 7540
www.luhringaugustine.com



34. *The Crucified Christ*, c. 1150-1175
South-West Germany, Swabia or the Rhine Valley
Gilded bronze
7 5/8 x 7 7/8 x 1 5/8 inches
(19.5 x 20 x 4 cm)



35. **Sebastián de Almonacid** (1460-1526) ?
Triptych of the Virgin and Child with Saints and Donors, c. 1500-20
Spain, Castile
Walnut with gilding and polychromy
28 3/4 x 45 x 5 1/8 inches (fully open)
(73 x 114.3 x 13 cm)

Viewing Room (from left)



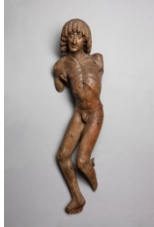
Part of an eight-lobed 'Star Ushak' carpet, c. 1550-1600
Western Anatolia, Ushak
Warp, weft and pile of wool with a symmetrically knotted pile
61 3/8 x 75 1/4 inches
(156 x 191 cm)



Regiomontanus (b. Johannes Müller; 1436-1476)
The personal Astrolabe of Cardinal Basilius Bessarion (1403-1472),
Dated 1462
Rome
Brass, signed 'Ioannis' and dedicated to Cardinal Bessarion
'Bessarionis de Cardine'
5 1/2 x 4 5/8 x 1/2 inches
(14 x 11.6 x 1.2 cm)

LUHRING AUGUSTINE TRIBECA

17 White Street
New York NY 10013
tel 646 960 7540
www.luhringaugustine.com



Saint Sebastian, c. 1480
Alpine lands
35 3/8 x 8 5/8 x 7 1/2 inches
(90 x 22 x 19 cm)
Limewood



A complete 'Lotto' Arabesque rug, c. 1500-1525
Western Anatolia
Warp, weft and pile of wool with a symmetrically knotted pile
78 3/8 x 47 5/8 inches
(199 x 121 cm)



An Early Christian Icon of the Virgin and Child, 6th century AD
Northern Egypt
Woven fabric of wool pile in a tabby weave on linen ground
31 x 15 inches
(78.9 x 38 cm)



Reliquary bust of a female saint, c. 1500-1510
Southern Netherlands, perhaps Limburg
Oak
15 3/8 x 11 x 5 1/4 inches
(39 x 28 x 13.5 cm)