

Georg Baselitz
20th Century Prints

LUHRING AUGUSTINE

1. *Lockenkopf II (Curly Head II)*, 1985
Numbered, signed and dated: 9/15, G. Baselitz 85
Woodcut on paper
33 ¾ x 24 ⅛ inches (85.8 x 61.2 cm)
Cat. Rais. 480



2. *Ohne Akkordeon II [Knopfauge] (Without Accordion II [Button Eye])*, 1985
Numbered, signed and dated: 9/15, G. Baselitz 85
Woodcut on paper
33 ¾ x 24 ⅛ inches (85.8 x 61.2 cm)
Cat. Rais. 496



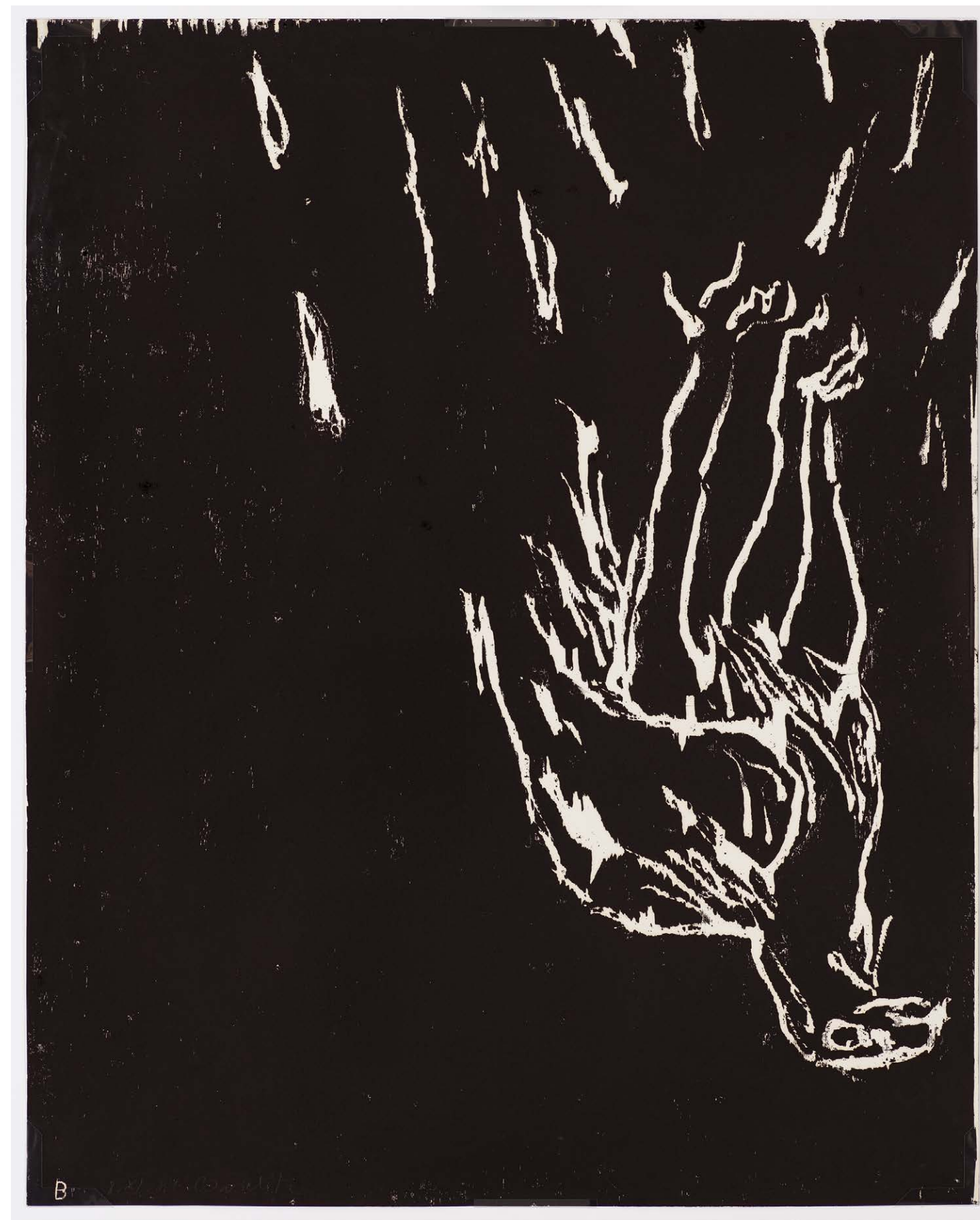
3.

Adler (Eagle), 1981

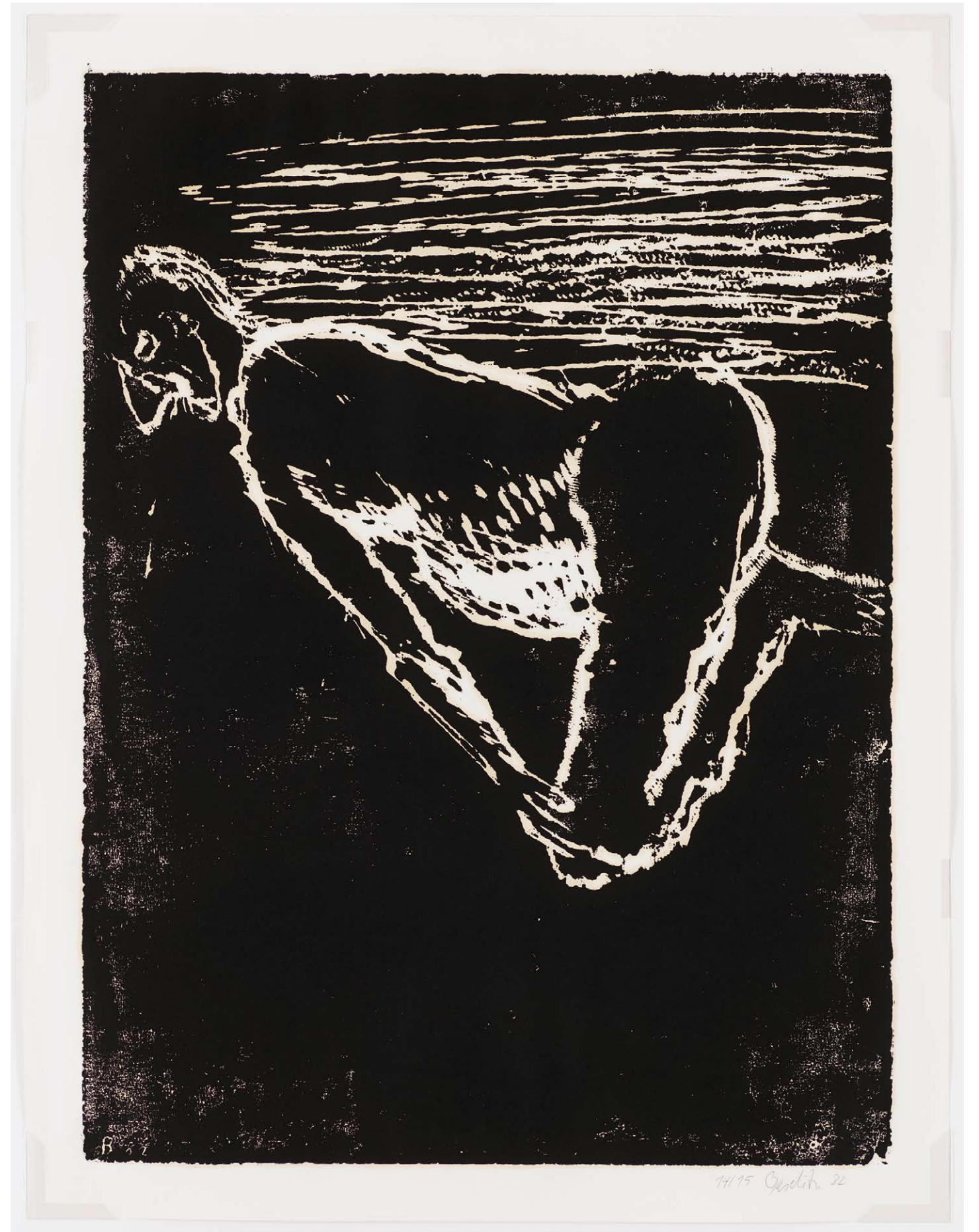
Woodcut on paper

39 3/8 x 31 1/2 inches (100 x 80 cm)

Cat. Rais. 419



4. *Mann an Strand (Man on the Beach)*, 1982
Numbered, signed and dated: 14/15, Baselitz 82
Woodcut on paper
37 ¼ x 28 ½ inches (94.7 x 72.3 cm)
Cat. Rais. 389



5.

Kopf (Head), 1982

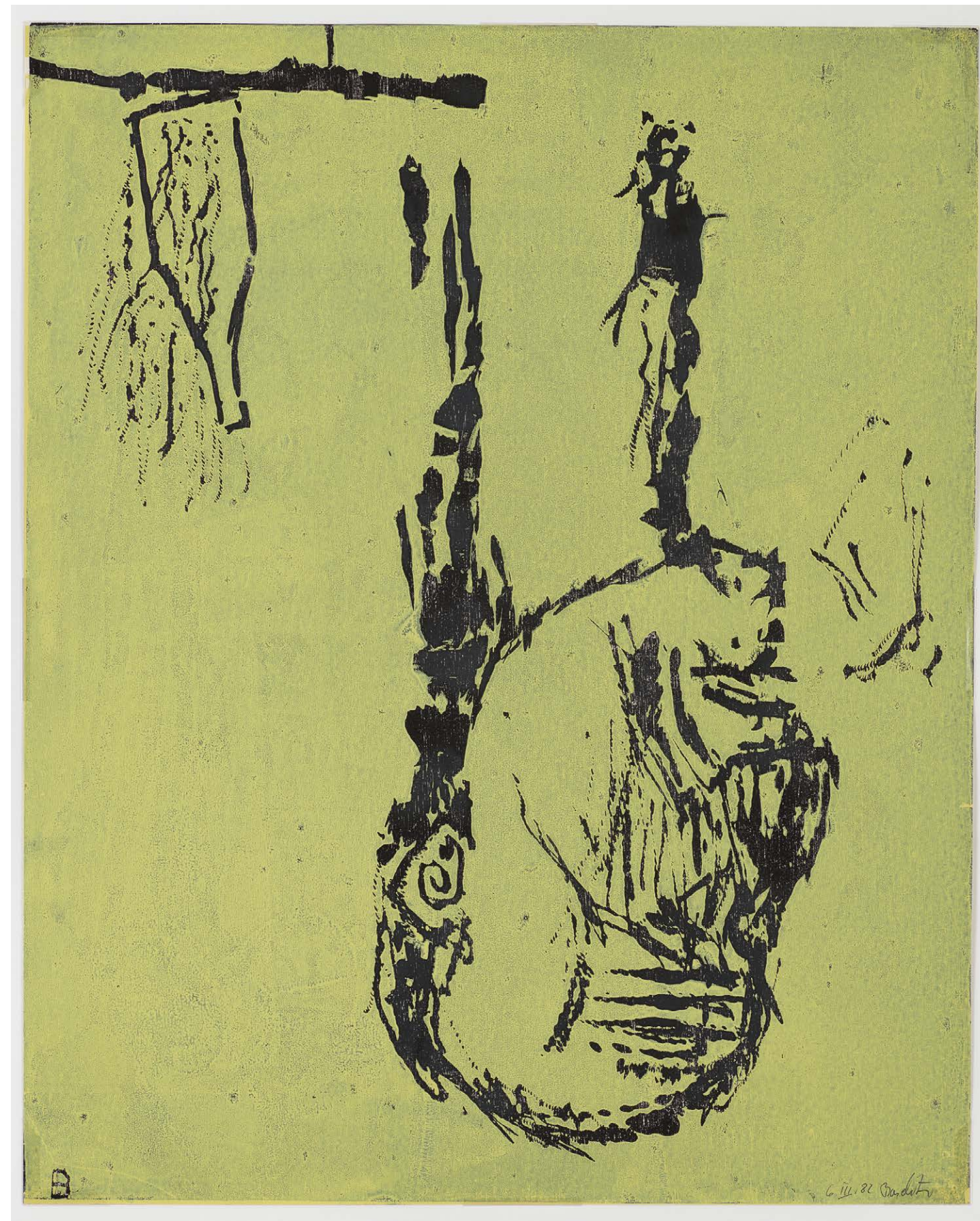
Trial proof, 1st state

Numbered and dated: 6. III 82

Woodcut on paper

39 3/8 x 31 1/2 inches (100 x 80 cm)

Cat. Rais. 399



6.

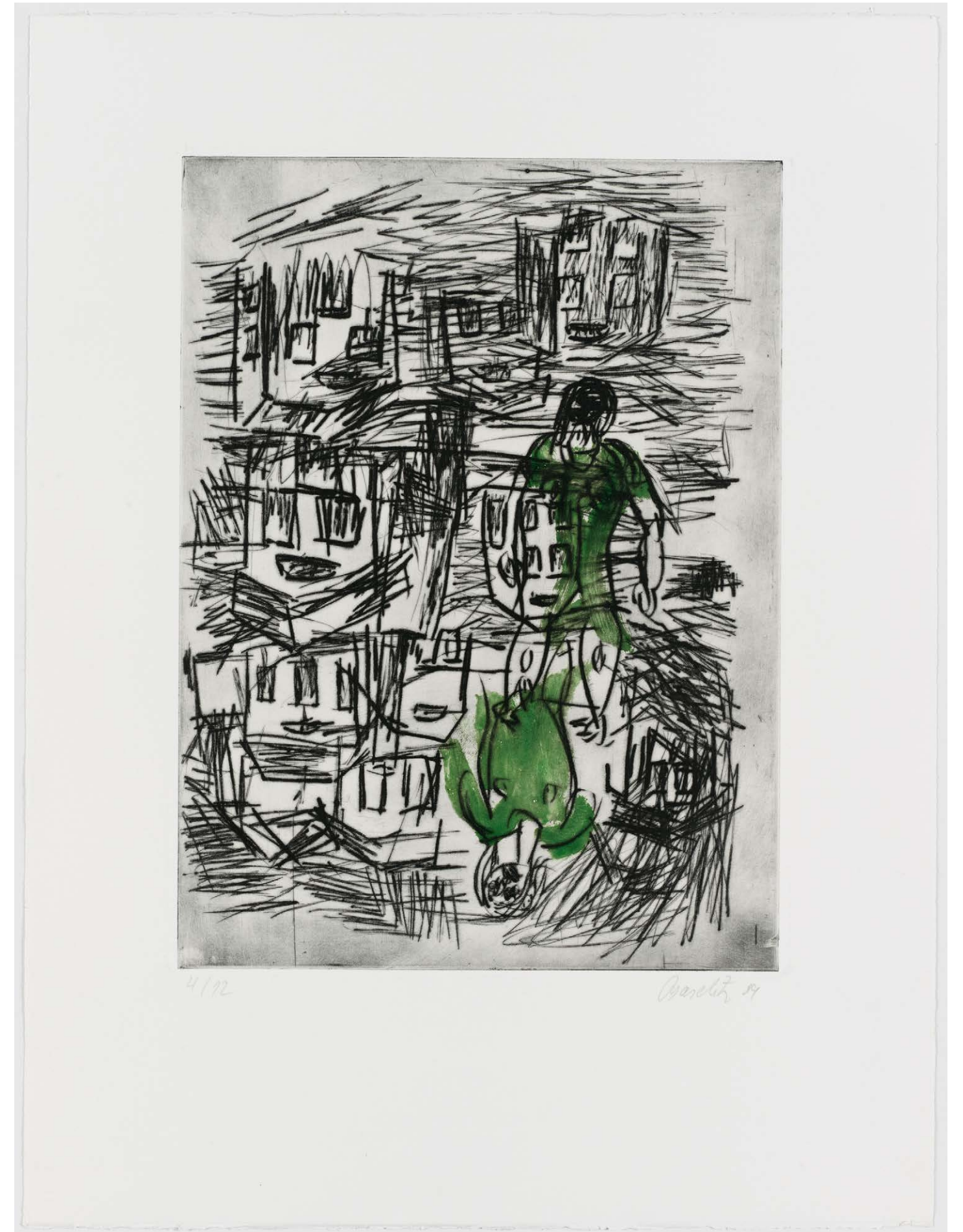
Vorstadt (Suburban), 1989

Numbered, signed and dated: 4/12, Baselitz 89

Drypoint etching on stenciled background paper

26 x 19 ¾ inches (66 x 50 cm)

Cat. Rais. 622



7. *Kaputt (Kaput)*, 1989
Numbered, signed and dated: 6/12, Baselitz 89
Drypoint etching on stenciled background paper
26 x 19 ¾ inches (66 x 50 cm)
Cat. Rais. 627



8.

Das Tor (The Gate), 1989

Numbered, signed and dated: 5/12, Baselitz 89

Drypoint etching on stenciled background paper

26 x 19 ¾ inches (66 x 50 cm)

Cat. Rais. 632



9.

Gross-Klein (Big-Small), 1989

Numbered, signed and dated: 9/12, Baselitz 89

Drypoint etching on stenciled background paper

26 x 19 ¾ inches (66 x 50 cm)

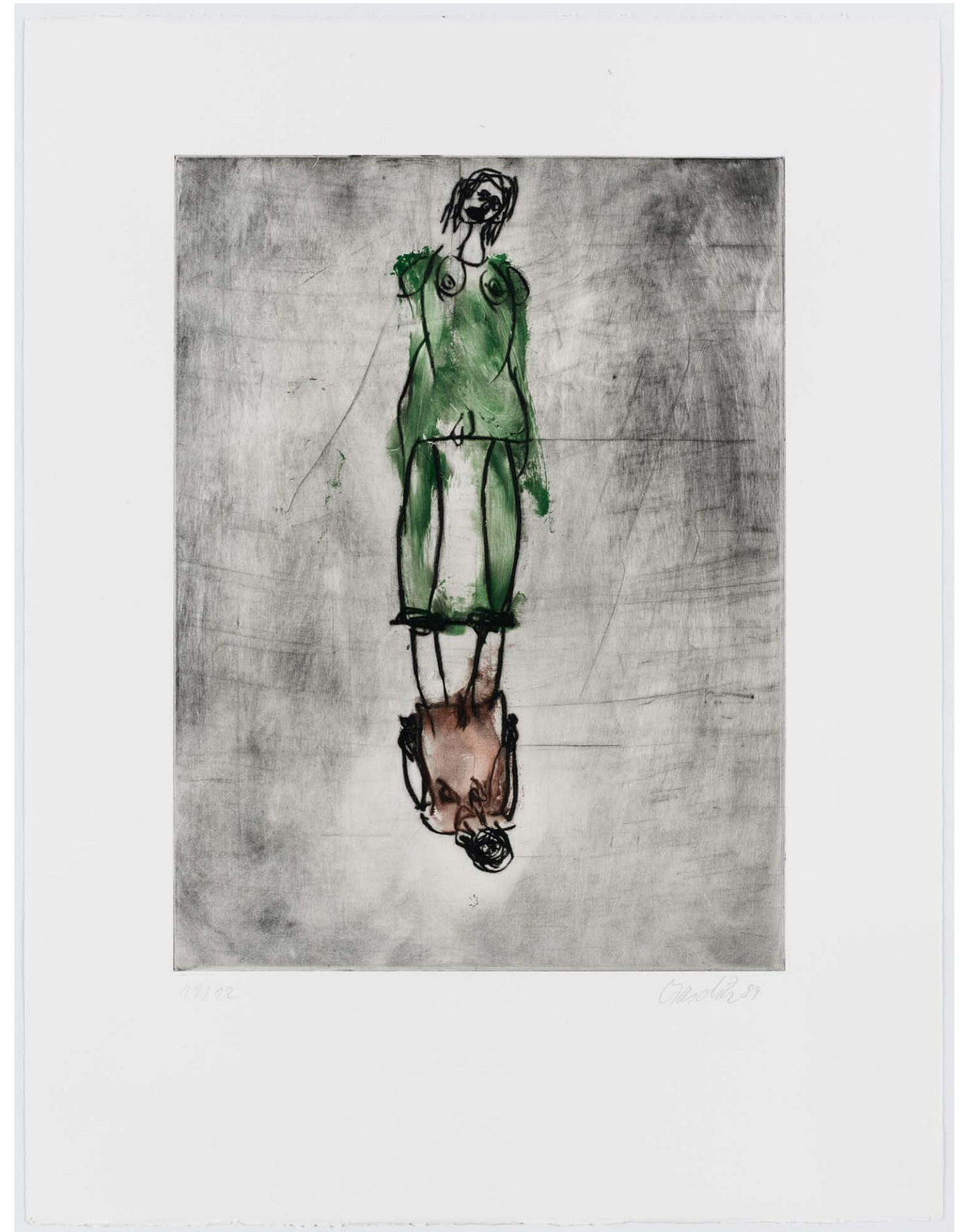
Cat. Rais. 621



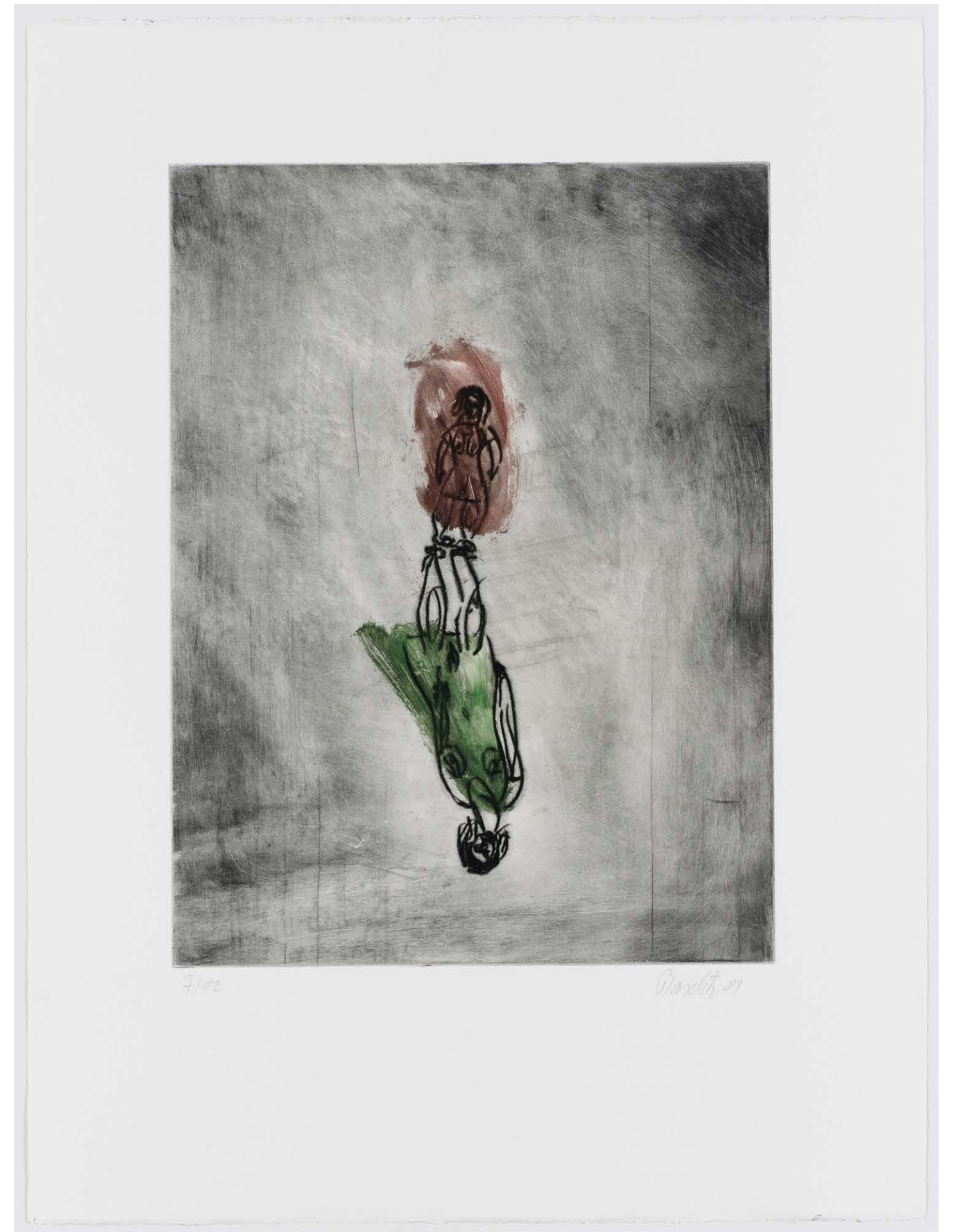
10. *Rot-Grün (Red-Green)*, 1989
Numbered, signed and dated: 12/12, Baselitz 89
Drypoint etching on stenciled background paper
26 x 19 ¾ inches (66 x 50 cm)
Cat. Rais. 618



11. *Grünes Kleid (Green Dress)*, 1989
Numbered, signed and dated: 11/12, Baselitz 89
Drypoint etching on stenciled background paper
26 x 19 ¾ inches (66 x 50 cm)
Cat. Rais. 614



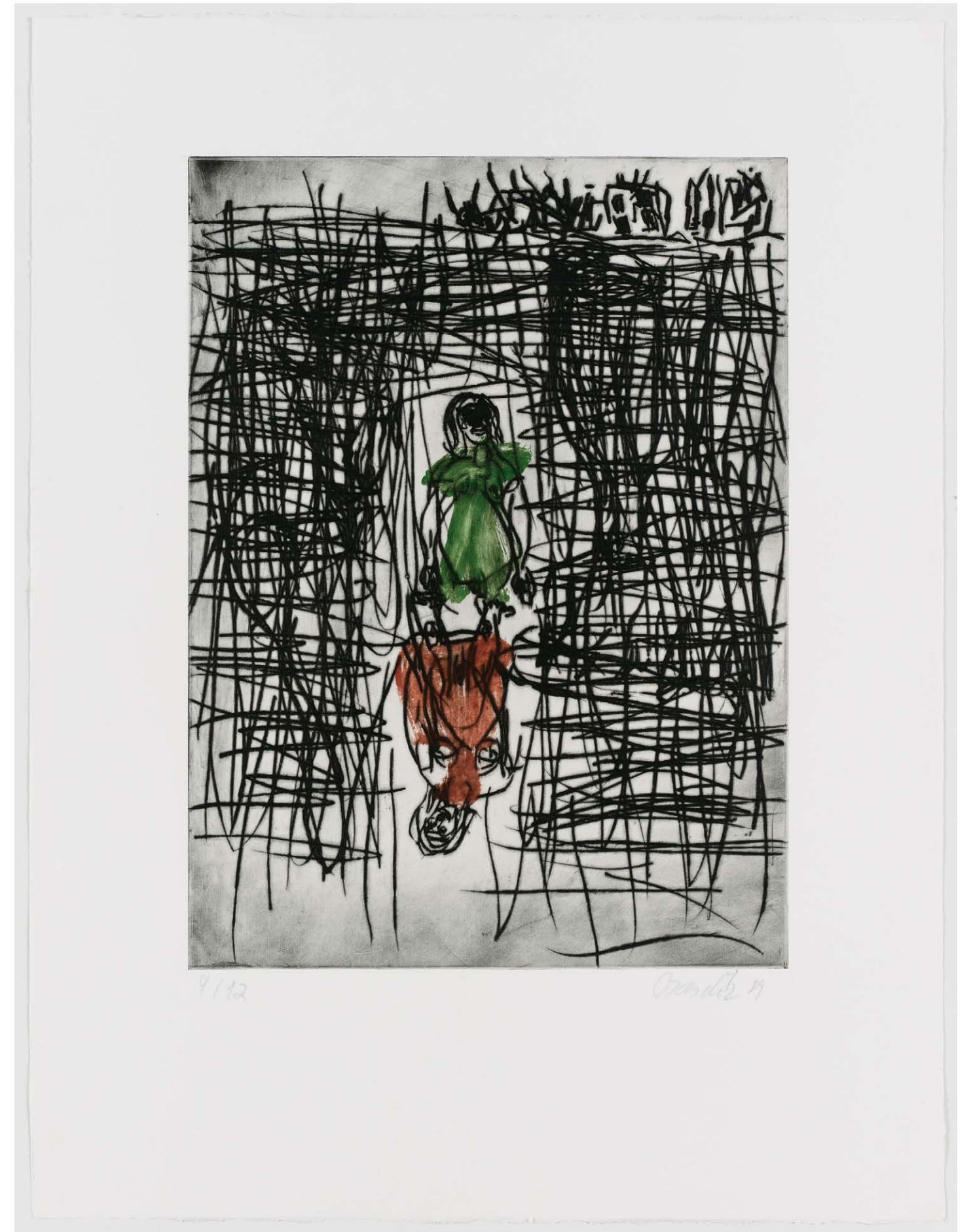
12. *Kleine Mitte (Small Middle)*, 1989
Numbered, signed and dated: 7/12, Baselitz 89
Drypoint etching on stenciled background paper
26 x 19 ¾ inches (66 x 50 cm)
Cat. Rais. 615



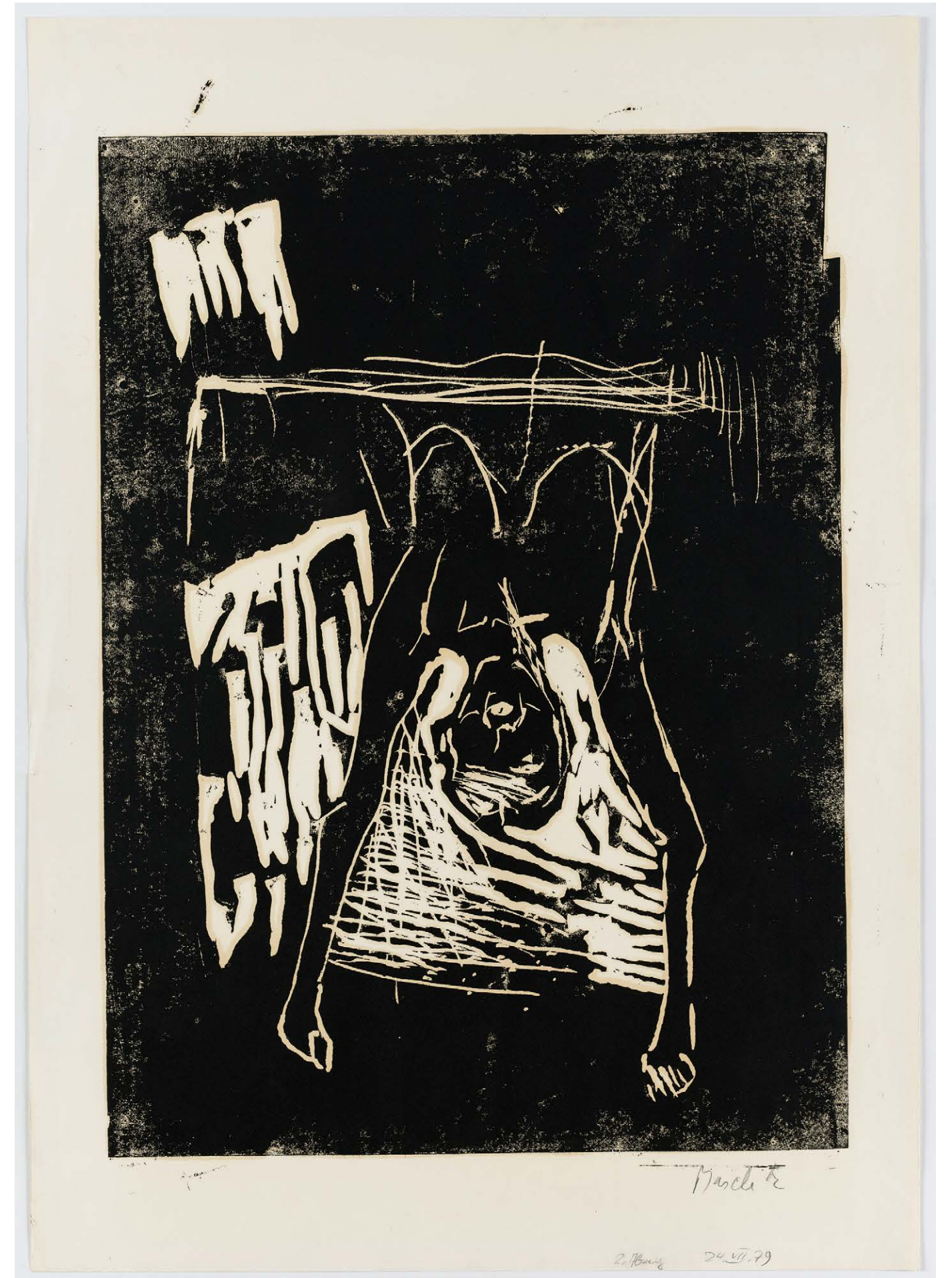
13. *Rauch (Smoke)*, 1989
Numbered, signed and dated: 11/12, Baselitz 89
Drypoint etching on stenciled background paper
26 x 19 ¾ inches (66 x 50 cm)
Cat. Rais. 607



14. *Schlechte Zeiten (Bad Times)*, 1989
Numbered, signed and dated: 9/12, Baselitz 89
Drypoint etching on stenciled background paper
26 x 19 ¾ inches (66 x 50 cm)
Cat. Rais. 617



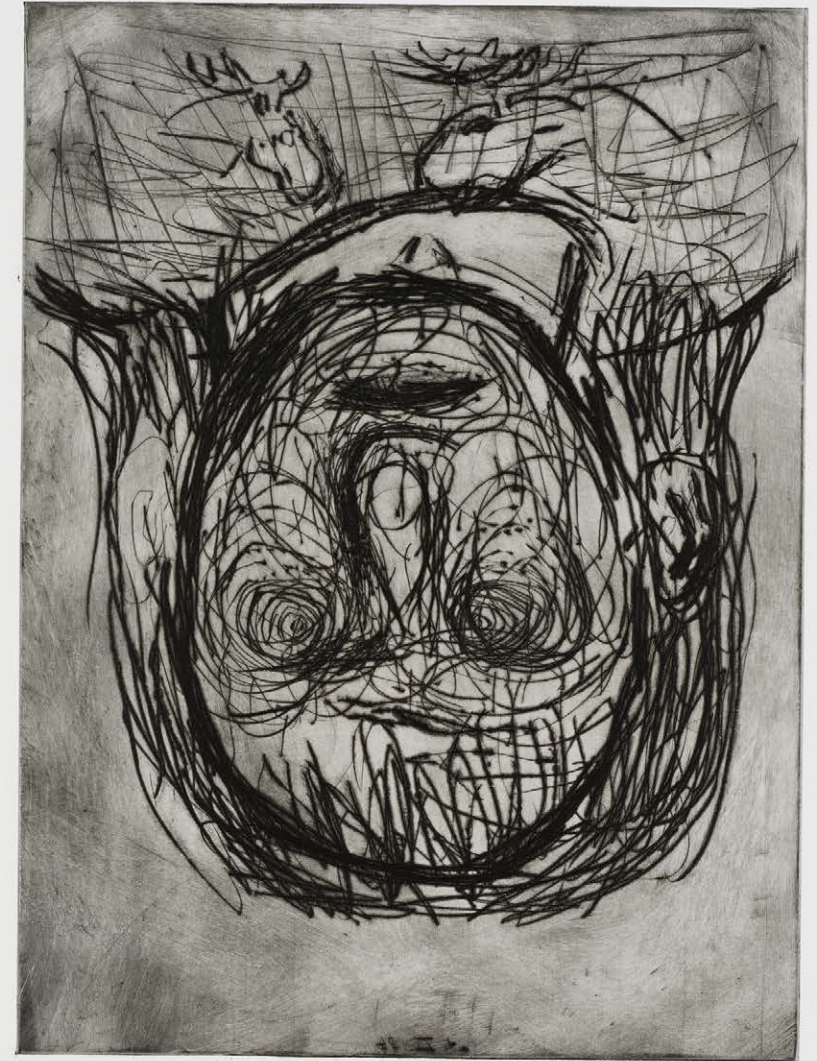
15. Untitled, 1979
Trial proof
Numbered and dated: 2. Abzug, 24 VII. 79
Linocut on paper
30 1/2 x 22 7/8 inches (77.5 x 58 cm)
Cat. Rais. 282



16. *Kopf II (Head II)*, 1984
Numbered, signed and dated: 6/10, G. Baselitz 84
Color woodcut on paper
34 7/8 x 23 7/8 inches (88.5 x 60.6 cm)
Cat. Rais. 440



17. *Norwegermädchen (Norwegian Girl)*, 1986
Numbered, signed and dated: 18/25, G Baselitz 86
Etching on paper
30 x 22 ½ inches (76.3 x 57 cm)
Cat. Rais. 557



18/25

G. Baselitz 86

18. *Kleiner Kopf II (Small Head II)*, 1986
Numbered, signed and dated: 14/20, G. Baselitz 86
Woodcut on paper
38 ¼ x 26 inches (97 x 66 cm)
Cat. Rais. 507



19. *Richard Wagner als Frau I (Richard Wagner as Woman I)*, 1986
Numbered, signed and dated: 13/20, Baselitz 86
Color woodcut on paper
29 ½ x 20 ¾ inches (75 x 52.8 cm)
Cat. Rais. 510



20. *Vier Hände (Four Hands)*, 1985
Numbered, signed and dated: 9/15, G. Baselitz 85
Woodcut on paper
33 ¾ x 24 ⅛ inches (85.8 x 61.2 cm)
Cat. Rais. 457

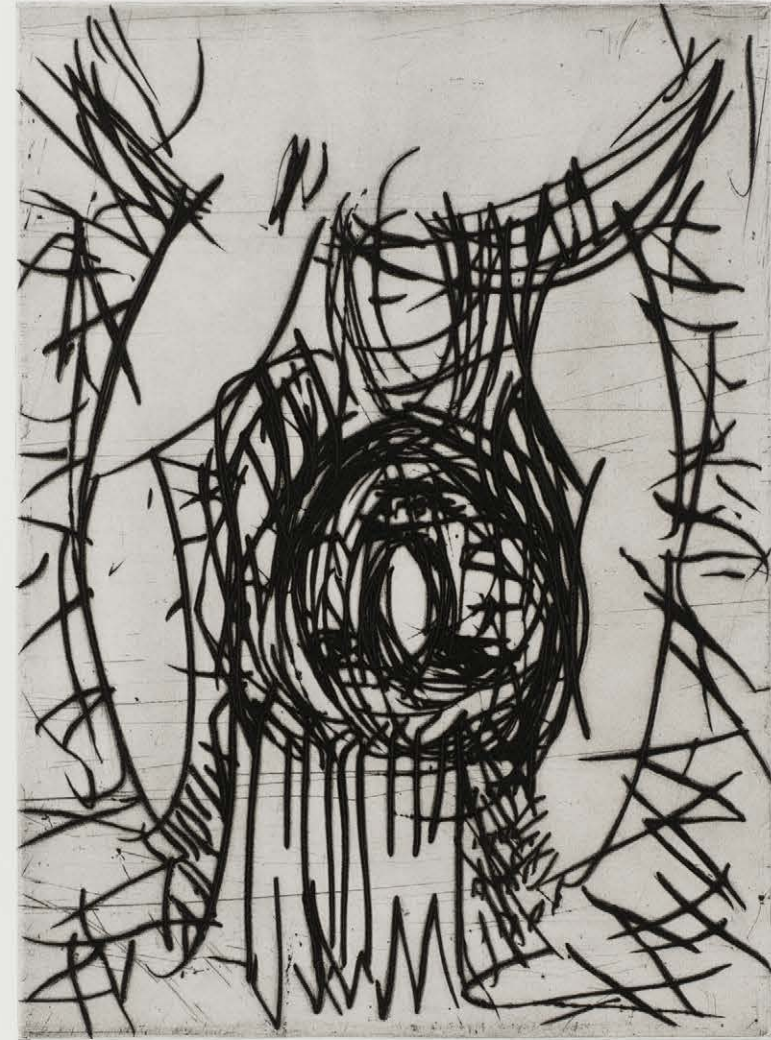


21. *Adler (Eagle)*, 1981
Signed: G. Baselitz
Woodcut on paper
48 7/8 x 34 5/8 in (124 x 88 cm)
Cat. Rais. 414



G. Rambow

22. *Mädchen mit Harmonika IV (Girl with Harmonica IV)*, 1988
Numbered, signed and dated: 19/20, G Baselitz 88
Etching on paper
19 ¾ x 14 ¾ inches (50.2 x 37.3 cm)
Cat. Rais. 590



19/20

G. Rambow 88

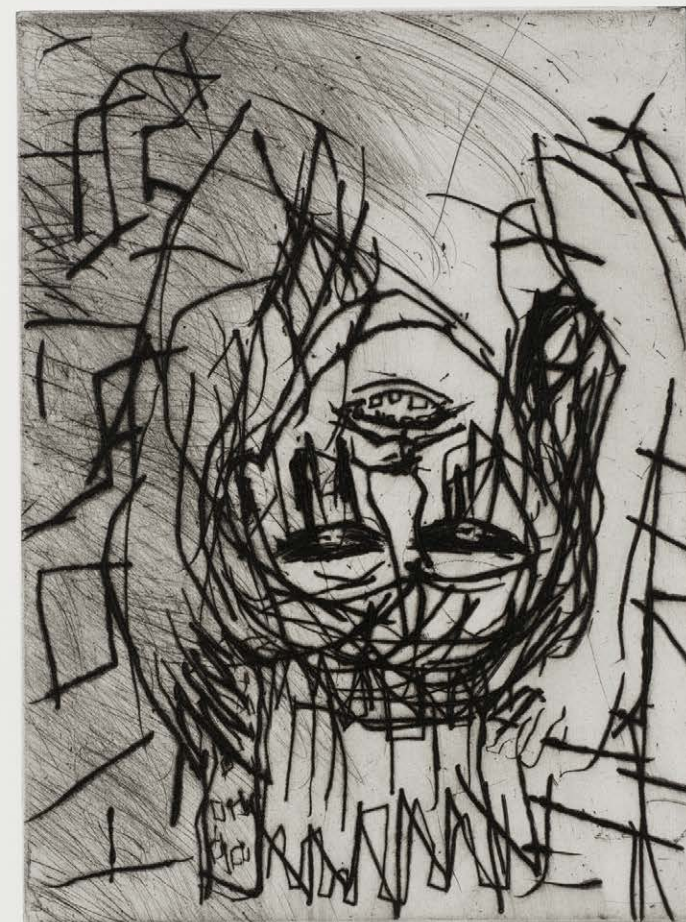
23. *Adler im Keller (Eagle in the Basement)*, 1987
Numbered, signed and dated: 15/20, G. Baselitz 87
Etching on paper
19 3/4 x 14 5/8 inches (50 x 37 cm)
Cat. Rais. 566



15/20

G. Baselitz 87

24. *Mädchen mit Harmonika II (Girl with Harmonica II)*, 1988
Numbered, signed and dated: 11/20, G Baselitz 88
Etching on paper
19 ¾ x 14 ¾ inches (50.2 x 37.3 cm)
Cat. Rais. 563



11/20

Rambow 88

25. *Hand am Ohr (Hand on Ear)*, 1985
Numbered, signed and dated: 9/15, G Baselitz 85
Woodcut on paper
33 ¾ x 24 ⅛ inches (85.8 x 61.2 cm)
Cat. Rais. 487



26. *Ralf Kopf [Schwarzes Loch bei Braunal Ralf] (Ralf Head [Black Hole at Braunal Ralf]), 1985*
Numbered, signed and dated: 9/15, G. Baselitz 85
Woodcut on paper
33 ¾ x 24 ⅛ inches (85.8 x 61.2 cm)
Cat. Rais. 494



27. *Italienischer Kopf (Italian Head)*, 1985
Numbered, signed and dated: 9/15, G. Baselitz 85
Woodcut on paper
33 ¾ x 24 ⅛ inches (85.8 x 61.2 cm)
Cat. Rais. 490



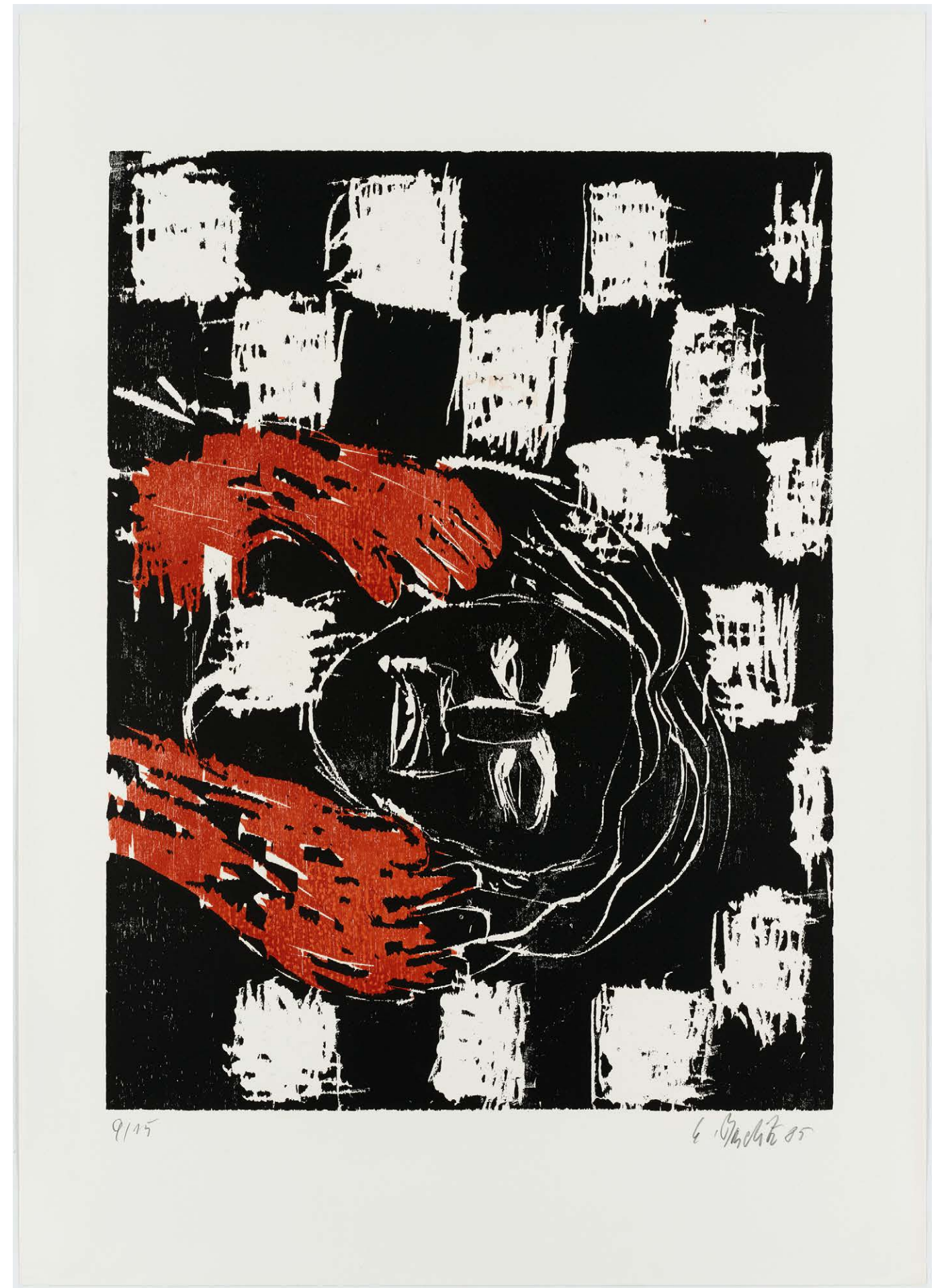
28. *Rotes Ohr [Lockenkopf III] (Red Ear [Curly Hair III])*, 1985
Numbered, signed and dated: 8/15, G. Baselitz 85
Woodcut on paper
33 ¾ x 24 ⅛ inches (85.8 x 61.2 cm)
Cat. Rais. 488



29. *Von vorne (From the front)*, 1985
Numbered, signed and dated: 9/15, G. Baselitz 85
Woodcut on paper
33 3/4 x 24 1/8 inches (85.8 x 61.2 cm)
Cat. Rais. 483



30. *Rote Hände [Zwei Hände] (Red hands [Two Hands])*, 1985
Numbered, signed and dated: 9/15, G. Baselitz 85
Woodcut on paper
33 ¾ x 24 ⅛ inches (85.8 x 61.2 cm)
Cat. Rais. 489



31. *Schwarze Mutter und weisses Kind (Black Mother and White Child)*, 1985
Numbered, signed and dated: 14/20, G Baselitz 85
Woodcut on paper
38 ¼ x 26 in (97 x 66 cm)
Cat. Rais. 467



32. *Schwarze Mutter, schwarzes Kind (Black Mother, Black Child)*, 1985
Numbered, signed and dated: 8/20, G. Baselitz 85
Woodcut on paper
38 ¼ x 26 inches (97 x 66 cm)
Cat. Rais. 463



33. *Mutter und Kind (Mother and Child)*, 1985
Numbered, signed and dated: 2/20, G. Baselitz 85
Woodcut on paper
38 ¼ x 26 ⅞ inches (97 x 66.5 cm)
Cat. Rais. 466



34. *Elch kaum (Moose hardly)*, 1992
Numbered, signed and dated: 20/30, Baselitz 92
Color etching on paper
29 3/4 x 22 5/8 inches (75.6 x 57.5 cm)



35. *Grüner Tag (Green Day)*, 1992
Numbered, signed and dated: 20/30, Baselitz 92
Color etching on paper
29 3/4 x 22 7/8 inches (75.6 x 58 cm)



36. *Klopfkopf (Knockhead)*, 1992
Numbered, signed and dated: 10/30, Baselitz 92
Color etching on paper
29 7/8 x 22 1/2 inches (75.8 x 57 cm)



10/30

Günther 9.92

37. *Im Wald (In the Forest)*, 1992
Numbered, signed and dated: 20/30, Baselitz 92
Color etching on paper
29 7/8 x 22 5/8 inches (76 x 57.5 cm)



38. *Zahlenspiel (Numbers game)*, 1992
Numbered, signed and dated: 20/30, Baselitz 92
Color etching on paper
29 7/8 x 22 5/8 inches (76 x 57.5 cm)



39. *Zwei Streifen (Two Stripes)*, 1996
Numbered, signed and dated: 7/12, Baselitz 96
Color etching on paper
31 ½ x 23 ⅞ inches (80 x 60.5 cm)



40. *Schlafende Frau (Sleeping Woman)*, 1996
Numbered, signed and dated: 7/12, Baselitz 96
Color etching on paper
31 ½ x 23 ⅞ inches (80 x 60.5 cm)



41. *Mittelpunkt (Focus)*, 1996
Numbered, signed and dated: 7/12, Baselitz 96
Etching on paper
31 ½ x 23 ⅞ inches (80 x 60.5 cm)



42. *Sternbild (Constellation)*, 1996
Numbered, signed and dated: 5/12, Baselitz 96
Etching on paper
31 ½ x 23 ⅝ inches (80 x 60 cm)



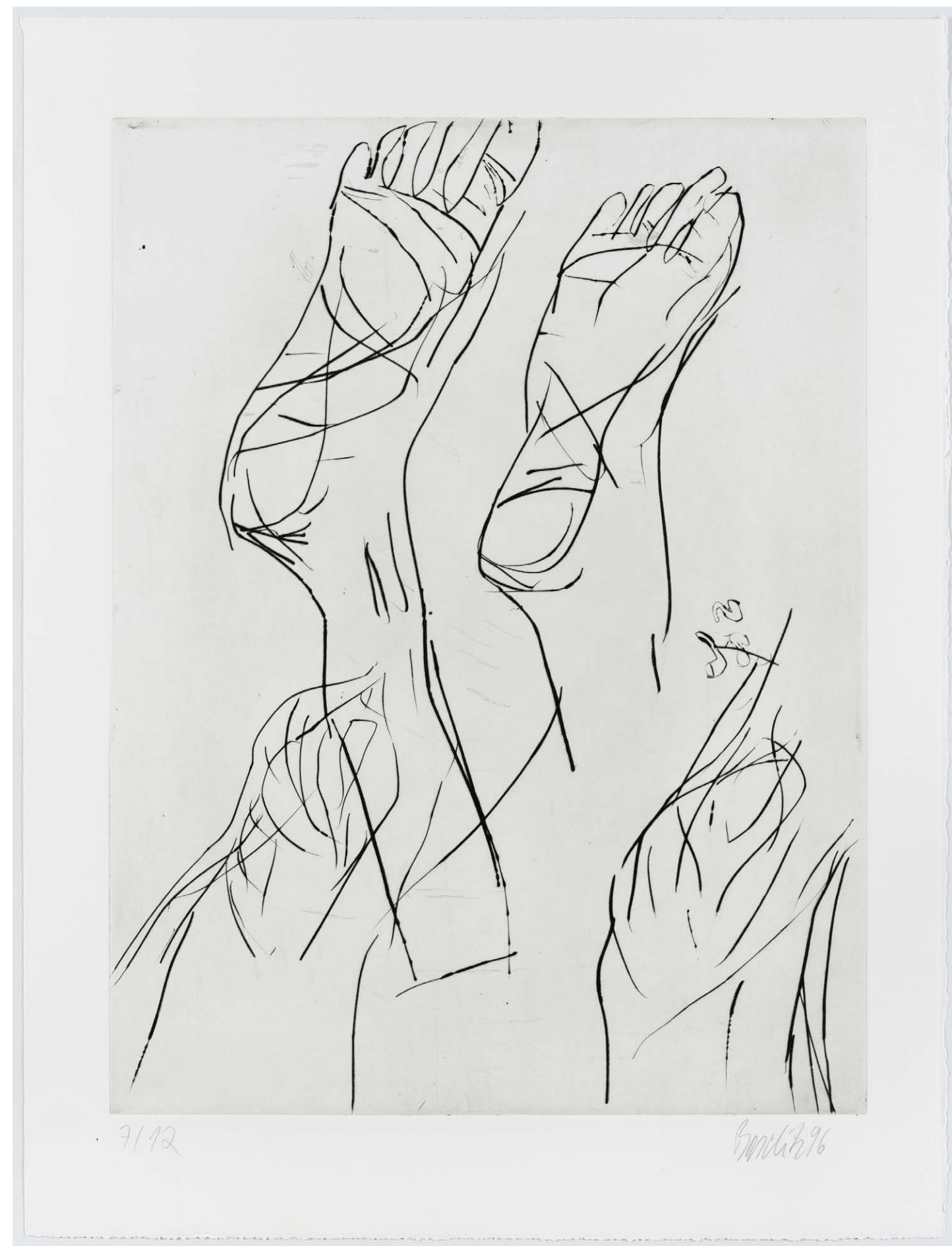
43. *Doppelakt (Double Nude)*, 1996
Numbered, signed and dated: 7/12, Baselitz 96
Color etching on paper
31 ½ x 23 ⅞ inches (80 x 60.5 cm)



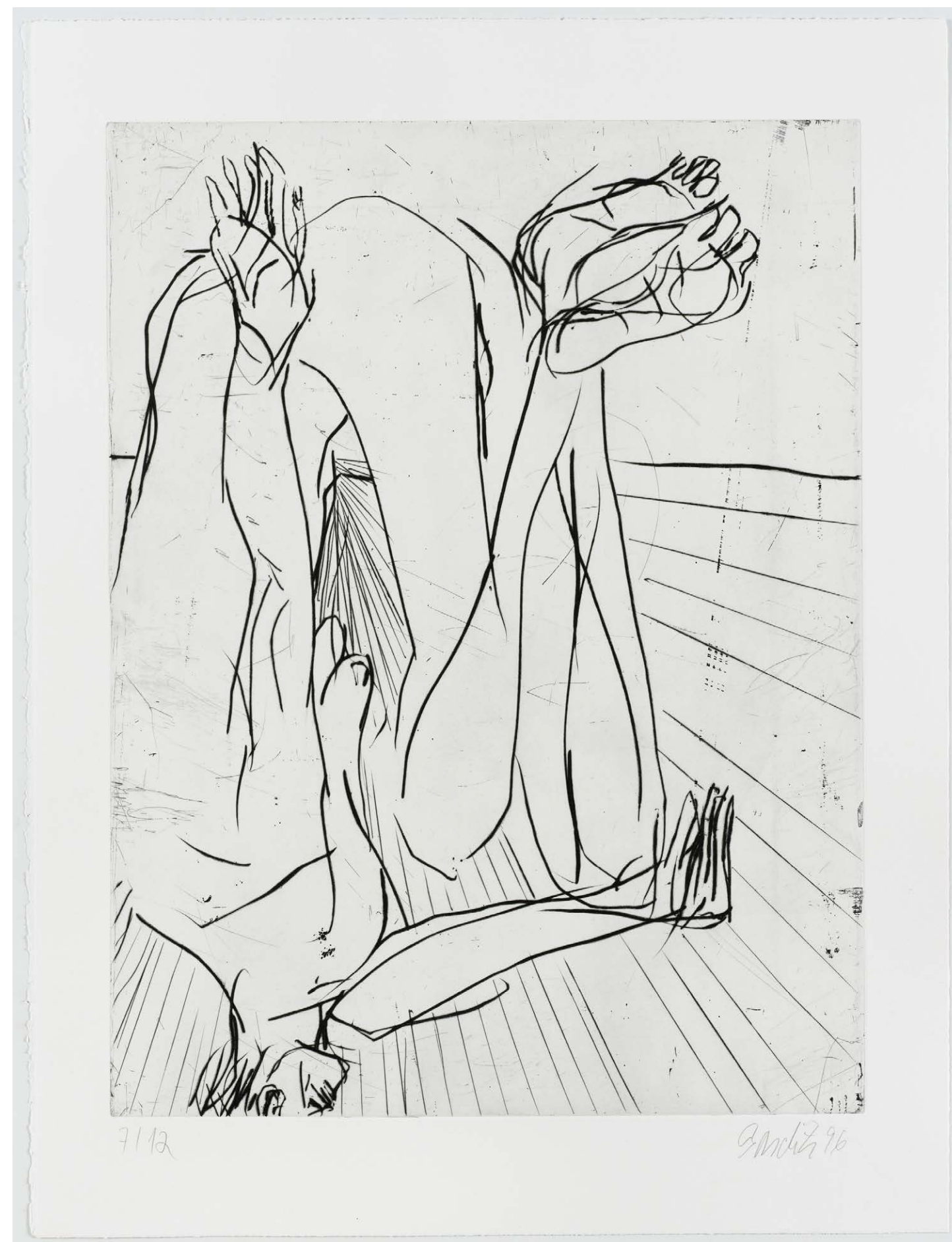
44. *Zelt (Tent)*, 1996
Numbered, signed and dated: 7/12, Baselitz 96
Color etching on paper
31 ½ x 23 ⅝ inches (80 x 60 cm)



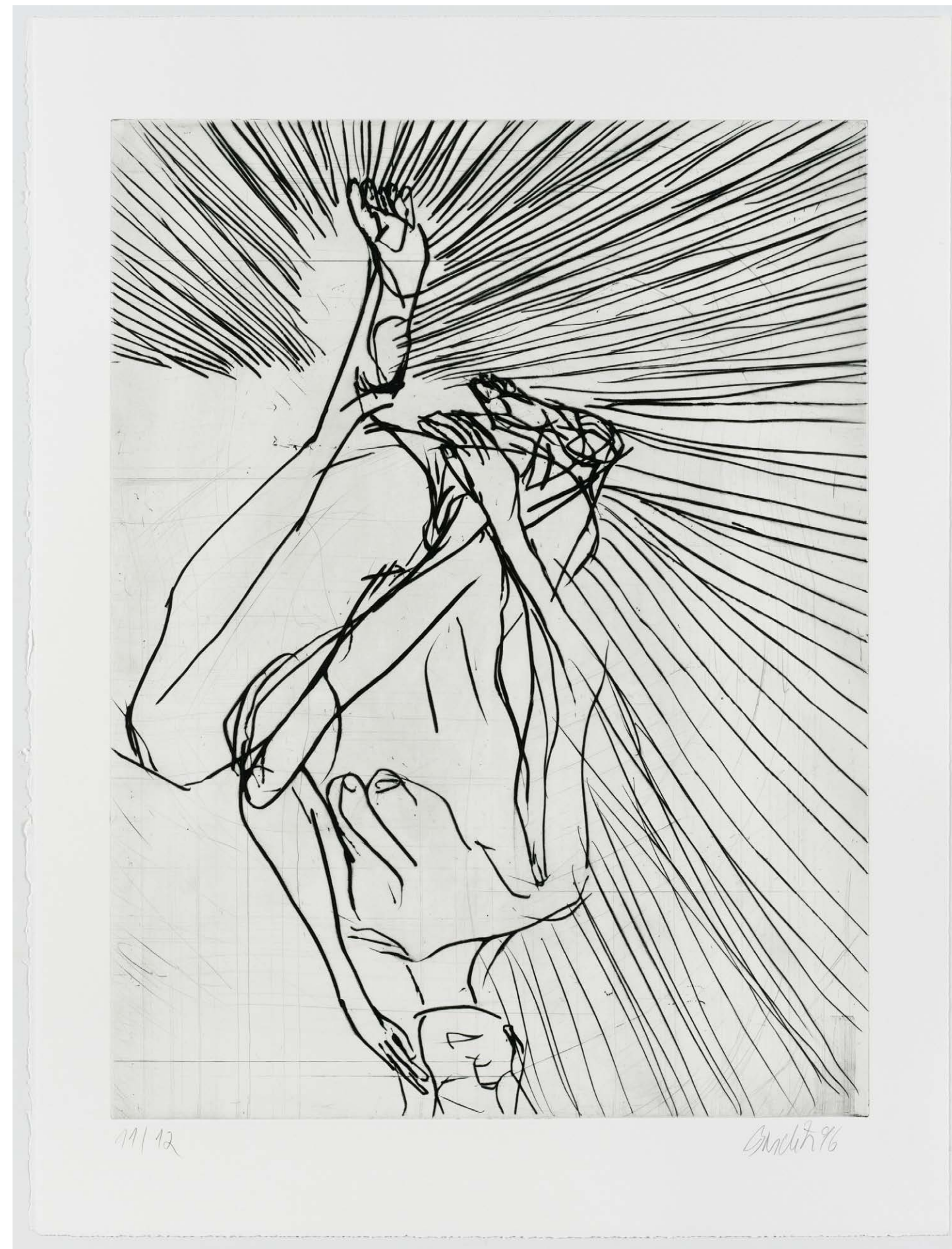
45. *Fuß und Knie (Foot and Knee)*, 1996
Numbered, signed and dated: 7/12, Baselitz 96
Etching on paper
31 ½ x 23 ⅞ inches (80 x 60.5 cm)



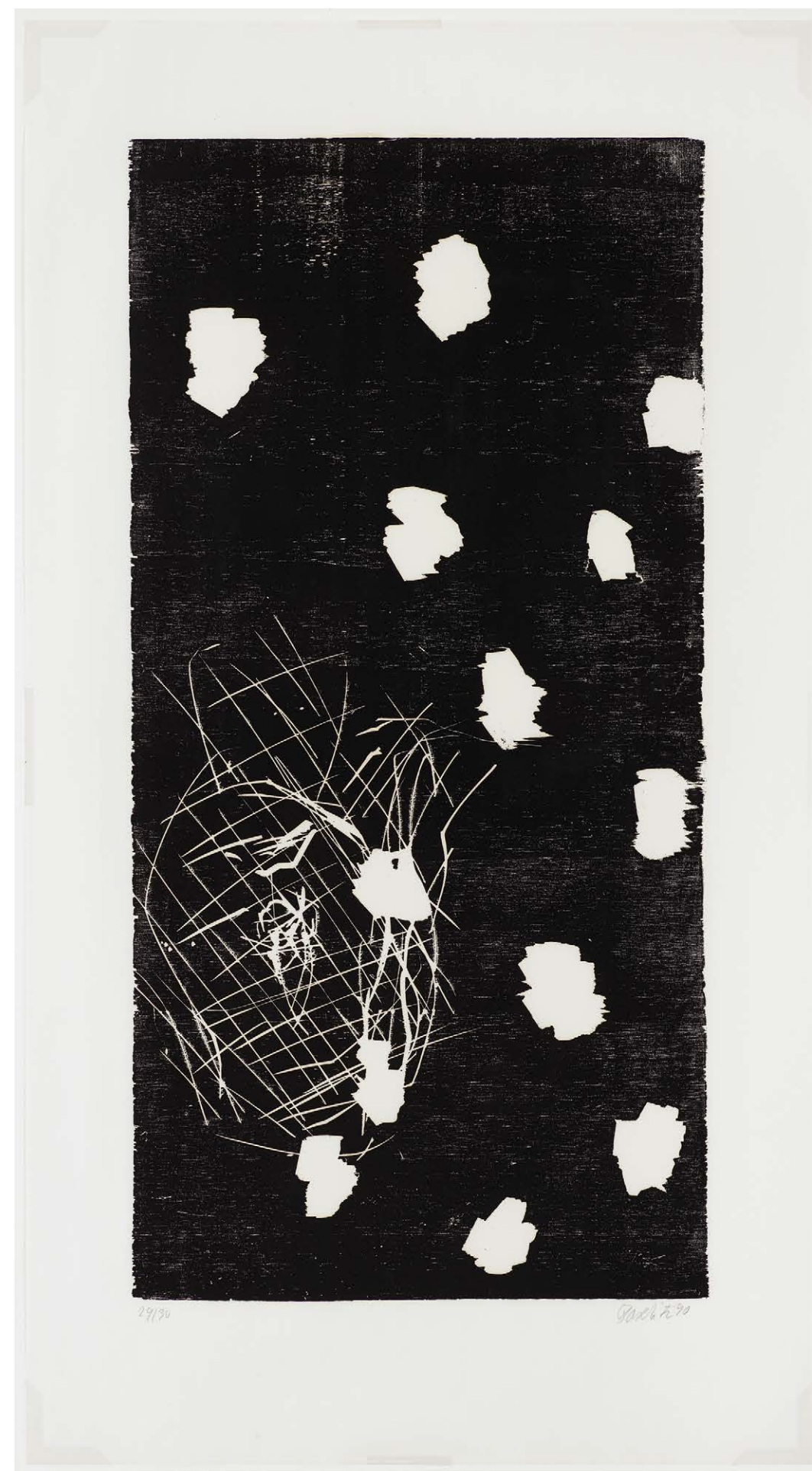
46. *Goldener Schnitt (Golden Ratio)*, 1996
Numbered, signed and dated: 7/12, Baselitz 96
Etching on paper
31 ½ x 23 ⅞ inches (80 x 60.5 cm)



47. *Ein Drittel (One Third)*, 1996
Numbered, signed and dated: 11/12, Baselitz 96
Etching on paper
31 ½ x 23 ⅞ inches (80 x 60.5 cm)



48. '45 - November, 1990
Numbered, signed and dated: 29/30, Baselitz 90
Woodcut on paper
48 7/8 x 26 3/4 inches (124 x 68 cm)



49. '45 - April, 1990
Numbered, signed and dated: 10/30, Baselitz 90
Woodcut on paper
48 7/8 x 26 3/4 inches (124 x 68 cm)



50. '45 - Oktober ('45 - October), 1990
Numbered, signed and dated: 13/30, Baselitz 90
Woodcut on paper
48 7/8 x 26 3/4 inches (124 x 68 cm)



51. '45 - Mai ('45 - May), 1990
Numbered, signed and dated: 29/30, G. Baselitz 90
Woodcut on paper
48 7/8 x 26 3/4 inches (124 x 68 cm)



52. '45 September, 1990
Numbered, signed and dated: 6/30, Baselitz 90
Woodcut on paper
48 7/8 x 26 3/4 inches (124 x 68 cm)



53. *Untitled (plate 7 from '45-III)*, 1991
Numbered, signed and dated: 18/30, Baselitz 91
Etching and drypoint on copper paper
30 ¼ x 22 inches (77 x 56 cm)







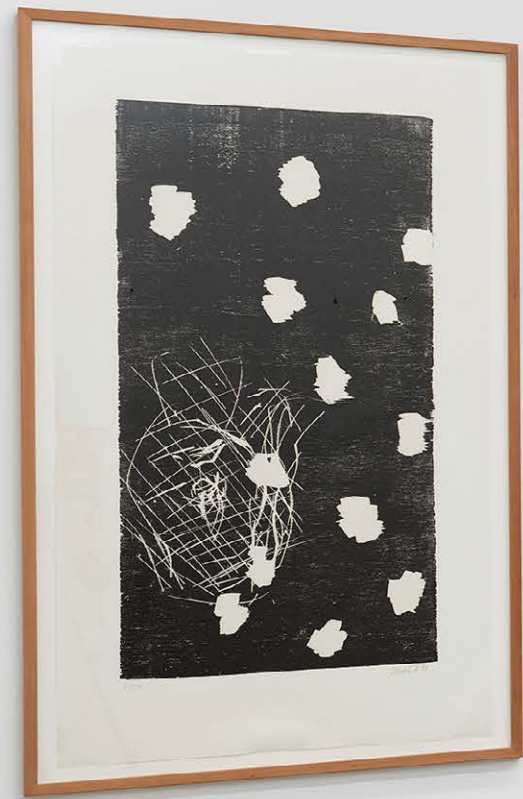












1. *Lockenkopf II (Curly Head II)*, 1985
Numbered, signed and dated: 9/15,
G. Baselitz 85
Woodcut on paper
33 ¾ x 24 ½ inches (85.8 x 61.2 cm)
Cat. Rais. 480
2. *Ohne Akkordeon II [Knopfauge] (Without
Accordion II [Button Eye])*, 1985
Numbered, signed and dated: 9/15,
G. Baselitz 85
Woodcut on paper
33 ¾ x 24 ½ inches (85.8 x 61.2 cm)
Cat. Rais. 496
3. *Adler (Eagle)*, 1981
Woodcut on paper
39 ¾ x 31 ½ inches (100 x 80 cm)
Cat. Rais. 419
4. *Mann an Strand (Man on the Beach)*, 1982
Numbered, signed and dated: 14/15,
Baselitz 82
Woodcut on paper
37 ¼ x 28 ½ inches (94.7 x 72.3 cm)
Cat. Rais. 389
5. *Kopf (Head)*, 1982
Trial proof, 1st state
Numbered and dated: 6. III 82
Woodcut on paper
39 ¾ x 31 ½ inches (100 x 80 cm)
Cat. Rais. 399
6. *Vorstadt (Suburban)*, 1989
Numbered, signed and dated: 4/12,
Baselitz 89
Drypoint etching on stenciled background
paper
26 x 19 ¾ inches (66 x 50 cm)
Cat. Rais. 622
7. *Kaputt (Kaput)*, 1989
Numbered, signed and dated: 6/12,
Baselitz 89
Drypoint etching on stenciled background
paper
26 x 19 ¾ inches (66 x 50 cm)
Cat. Rais. 627
8. *Das Tor (The Gate)*, 1989
Numbered, signed and dated: 5/12,
Baselitz 89
Drypoint etching on stenciled background
paper
26 x 19 ¾ inches (66 x 50 cm)
Cat. Rais. 632
9. *Gross-Klein (Big-Small)*, 1989
Numbered, signed and dated: 9/12,
Baselitz 89
Drypoint etching on stenciled background
paper
26 x 19 ¾ inches (66 x 50 cm)
Cat. Rais. 621
10. *Rot-Grün (Red-Green)*, 1989
Numbered, signed and dated: 12/12,
Baselitz 89
Drypoint etching on stenciled background
paper
26 x 19 ¾ inches (66 x 50 cm)
Cat. Rais. 618
11. *Grünes Kleid (Green Dress)*, 1989
Numbered, signed and dated: 11/12,
Baselitz 89
Drypoint etching on stenciled background
paper
26 x 19 ¾ inches (66 x 50 cm)
Cat. Rais. 614
12. *Kleine Mitte (Small Middle)*, 1989
Numbered, signed and dated: 7/12,
Baselitz 89
Drypoint etching on stenciled background
paper
26 x 19 ¾ inches (66 x 50 cm)
Cat. Rais. 615
13. *Rauch (Smoke)*, 1989
Numbered, signed and dated: 11/12,
Baselitz 89
Drypoint etching on stenciled background
paper
26 x 19 ¾ inches (66 x 50 cm)
Cat. Rais. 607
14. *Schlechte Zeiten (Bad Times)*, 1989
Numbered, signed and dated: 9/12,
Baselitz 89
Drypoint etching on stenciled background
paper
26 x 19 ¾ inches (66 x 50 cm)
Cat. Rais. 617
15. Untitled, 1979
Trial proof
Numbered and dated: 2. Abzug, 24 VII. 79
Linocut on paper
30 ½ x 22 ⅞ inches (77.5 x 58 cm)
Cat. Rais. 282
16. *Kopf II (Head II)*, 1984
Numbered, signed and dated: 6/10,
G. Baselitz 84
Color woodcut on paper
34 ⅞ x 23 ⅞ inches (88.5 x 60.6 cm)
Cat. Rais. 440
17. *Norwegermädchen (Norwegian Girl)*, 1986
Numbered, signed and dated: 18/25,
G Baselitz 86
Etching on paper
30 x 22 ½ inches (76.3 x 57 cm)
Cat. Rais. 557
18. *Kleiner Kopf II (Small Head II)*, 1986
Numbered, signed and dated: 14/20,
G. Baselitz 86
Woodcut on paper
38 ¼ x 26 inches (97 x 66 cm)
Cat. Rais. 507
19. *Richard Wagner als Frau I (Richard Wagner
as Woman I)*, 1986
Numbered, signed and dated: 13/20,
Baselitz 86
Color woodcut on paper
29 ½ x 20 ¾ inches (75 x 52.8 cm)
Cat. Rais. 510
20. *Vier Hände (Four Hands)*, 1985
Numbered, signed and dated: 9/15,
G. Baselitz 85
Woodcut on paper
33 ¾ x 24 ½ inches (85.8 x 61.2 cm)
Cat. Rais. 457
21. *Adler (Eagle)*, 1981
Signed: G. Baselitz
Woodcut on paper
48 ⅞ x 34 ⅞ in (124 x 88 cm)
Cat. Rais. 414
22. *Mädchen mit Harmonika IV (Girl with
Harmonica IV)*, 1988
Numbered, signed and dated: 19/20,
G Baselitz 88
Etching on paper
19 ¾ x 14 ¾ inches (50.2 x 37.3 cm)
Cat. Rais. 590
23. *Adler im Keller (Eagle in the Basement)*, 1987
Numbered, signed and dated: 15/20,
G. Baselitz 87
Etching on paper
19 ¾ x 14 ⅝ inches (50 x 37 cm)
Cat. Rais. 566
24. *Mädchen mit Harmonika II (Girl with
Harmonica II)*, 1988
Numbered, signed and dated: 11/20,
G Baselitz 88
Etching on paper
19 ¾ x 14 ¾ inches (50.2 x 37.3 cm)
Cat. Rais. 563
25. *Hand am Ohr (Hand on Ear)*, 1985
Numbered, signed and dated: 9/15,
G Baselitz 85
Woodcut on paper
33 ¾ x 24 ½ inches (85.8 x 61.2 cm)
Cat. Rais. 487
26. *Ralf Kopf [Schwarzes Loch bei Braunal/
Ralf] (Ralf Head [Black Hole at Braunal/
Ralf])*, 1985
Numbered, signed and dated: 9/15,
G. Baselitz 85
Woodcut on paper
33 ¾ x 24 ½ inches (85.8 x 61.2 cm)
Cat. Rais. 494

27. *Italienischer Kopf (Italian Head)*, 1985
Numbered, signed and dated: 9/15,
G. Baselitz 85
Woodcut on paper
33 ¾ x 24 ½ inches (85.8 x 61.2 cm)
Cat. Rais. 490
28. *Rotes Ohr [Lockenkopf III] (Red Ear [Curly Hair III])*, 1985
Numbered, signed and dated: 8/15,
G. Baselitz 85
Woodcut on paper
33 ¾ x 24 ½ inches (85.8 x 61.2 cm)
Cat. Rais. 488
29. *Von vorne (From the front)*, 1985
Numbered, signed and dated: 9/15,
G. Baselitz 85
Woodcut on paper
33 ¾ x 24 ½ inches (85.8 x 61.2 cm)
Cat. Rais. 483
30. *Rote Hände [Zwei Hände] (Red hands [Two Hands])*, 1985
Numbered, signed and dated: 9/15,
G. Baselitz 85
Woodcut on paper
33 ¾ x 24 ½ inches (85.8 x 61.2 cm)
Cat. Rais. 489
31. *Schwarze Mutter und weisses Kind (Black Mother and White Child)*, 1985
Numbered, signed and dated: 14/20,
G. Baselitz 85
Woodcut on paper
38 ¼ x 26 in (97 x 66 cm)
Cat. Rais. 467
32. *Schwarze Mutter, schwarzes Kind (Black Mother, Black Child)*, 1985
Numbered, signed and dated: 8/20,
G. Baselitz 85
Woodcut on paper
38 ¼ x 26 inches (97 x 66 cm)
Cat. Rais. 463
33. *Mutter und Kind (Mother and Child)*, 1985
Numbered, signed and dated: 2/20,
G. Baselitz 85
Woodcut on paper
38 ¼ x 26 ½ inches (97 x 66.5 cm)
Cat. Rais. 466
34. *Elch kaum (Moose hardly)*, 1992
Numbered, signed and dated: 20/30,
Baselitz 92
Color etching on paper
29 ¾ x 22 ⅝ inches (75.6 x 57.5 cm)
35. *Grüner Tag (Green Day)*, 1992
Numbered, signed and dated: 20/30,
Baselitz 92
Color etching on paper
29 ¾ x 22 ⅞ inches (75.6 x 58 cm)
36. *Klopfkopf (Knockhead)*, 1992
Numbered, signed and dated: 10/30,
Baselitz 92
Color etching on paper
29 ⅞ x 22 ½ inches (75.8 x 57 cm)
37. *Im Wald (In the Forest)*, 1992
Numbered, signed and dated: 20/30,
Baselitz 92
Color etching on paper
29 ⅞ x 22 ⅝ inches (76 x 57.5 cm)
38. *Zahlenspiel (Numbers game)*, 1992
Numbered, signed and dated: 20/30,
Baselitz 92
Color etching on paper
29 ⅞ x 22 ⅝ inches (76 x 57.5 cm)
39. *Zwei Streifen (Two Stripes)*, 1996
Numbered, signed and dated: 7/12,
Baselitz 96
Color etching on paper
31 ½ x 23 ⅞ inches (80 x 60.5 cm)
40. *Schlafende Frau (Sleeping Woman)*, 1996
Numbered, signed and dated: 7/12,
Baselitz 96
Color etching on paper
31 ½ x 23 ⅞ inches (80 x 60.5 cm)
41. *Mittelpunkt (Focus)*, 1996
Numbered, signed and dated: 7/12,
Baselitz 96
Etching on paper
31 ½ x 23 ⅞ inches (80 x 60.5 cm)
42. *Sternbild (Constellation)*, 1996
Numbered, signed and dated: 5/12,
Baselitz 96
Etching on paper
31 ½ x 23 ⅝ inches (80 x 60 cm)
43. *Doppelakt (Double Nude)*, 1996
Numbered, signed and dated: 7/12,
Baselitz 96
Color etching on paper
31 ½ x 23 ⅞ inches (80 x 60.5 cm)
44. *Zelt (Tent)*, 1996
Numbered, signed and dated: 7/12,
Baselitz 96
Color etching on paper
31 ½ x 23 ⅝ inches (80 x 60 cm)
45. *Fuß und Knie (Foot and Knee)*, 1996
Numbered, signed and dated: 7/12,
Baselitz 96
Etching on paper
31 ½ x 23 ⅞ inches (80 x 60.5 cm)
46. *Goldener Schnitt (Golden Ratio)*, 1996
Numbered, signed and dated: 7/12,
Baselitz 96
Etching on paper
31 ½ x 23 ⅞ inches (80 x 60.5 cm)
47. *Ein Drittel (One Third)*, 1996
Numbered, signed and dated: 11/12,
Baselitz 96
Etching on paper
31 ½ x 23 ⅞ inches (80 x 60.5 cm)
48. *'45 - November*, 1990
Numbered, signed and dated: 29/30,
Baselitz 90
Woodcut on paper
48 ⅞ x 26 ¾ inches (124 x 68 cm)
49. *'45 - April*, 1990
Numbered, signed and dated: 10/30,
Baselitz 90
Woodcut on paper
48 ⅞ x 26 ¾ inches (124 x 68 cm)
50. *'45 - Oktober ('45 - October)*, 1990
Numbered, signed and dated: 13/30,
Baselitz 90
Woodcut on paper
48 ⅞ x 26 ¾ inches (124 x 68 cm)
51. *'45 - Mai ('45 - May)*, 1990
Numbered, signed and dated: 29/30,
G. Baselitz 90
Woodcut on paper
48 ⅞ x 26 ¾ inches (124 x 68 cm)
52. *'45 September*, 1990
Numbered, signed and dated: 6/30,
Baselitz 90
Woodcut on paper
48 ⅞ x 26 ¾ inches (124 x 68 cm)
53. *Untitled (plate 7 from '45-III)*, 1991
Numbered, signed and dated: 18/30,
Baselitz 91
Etching and drypoint on copper paper
30 ¼ x 22 inches (77 x 56 cm)

This catalog is presented on the occasion of the exhibition
Georg Baselitz: 20th Century Prints
Luhring Augustine Chelsea, 531 West 24th Street, New York
September 6–October 15, 2022

Published in 2022 by
Luhring Augustine
531 West 24th Street
New York, New York 10011
USA
+1 212 206 9100
luhringaugustine.com

All rights reserved. No part of this book may be
reproduced or transmitted in any form or by any means,
electronic or mechanical, including photocopy, recording,
or any other information storage and retrieval system, or
otherwise without written permission from the publisher.

Artwork photography © bernhardstrauss.com
Installation photography © Farzad Owrang

Publication © 2022 Luhring Augustine

All artworks © 2022 Georg Baselitz