

LUHRING AUGUSTINE

531 West 24th Street
New York NY 10011
tel 212 206 9100 fax 212 206 9055
www.luhringaugustine.com

Georg Baselitz
20th Century Prints
September 6 - October 15, 2022

Entrance, clockwise from left:



Georg Baselitz
Lockenkopf II (Curly Head II), 1985
9/15
G. Baselitz 85
Cat. Rais. 480
Woodcut on paper
33 3/4 x 24 1/8 inches
(85.8 x 61.2 cm)



Georg Baselitz
*Ohne Akkordeon II [Knopfauge] (Without
Accordion II [Button Eye])*, 1985
9/15
G. Baselitz 85
Cat. Rais. 496
Woodcut on paper
33 3/4 x 24 1/8 inches
(85.8 x 61.2 cm)



Georg Baselitz
Adler (Eagle), 1981
Cat. Rais. 419
From an edition of 50
Woodcut on paper
39 3/8 x 31 1/2 inches
(100 x 80 cm)

Main Gallery, clockwise from left:



Georg Baselitz
Mann an Strand (Man on the Beach), 1982
14/15
Baselitz 82
Cat. Rais. 389
Woodcut on paper
37 1/4 x 28 1/2 inches
(94.7 x 72.3 cm)

LUHRING AUGUSTINE

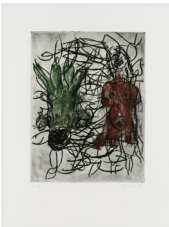
531 West 24th Street
New York NY 10011
tel 212 206 9100 fax 212 206 9055
www.luhringaugustine.com



Georg Baselitz
Kopf (Head), 1982
trial proof, 1st state: 6. III 82
Cat. Rais. 399
Woodcut on paper
39 3/8 x 31 1/2 inches
(100 x 80 cm)



Georg Baselitz
Vorstadt (Suburban), 1989
4/12
Baselitz 89
Cat. Rais. 622
Drypoint etching on stenciled background paper
26 x 19 3/4 inches
(66 x 50 cm)



Georg Baselitz
Kaputt (Kaput), 1989
6/12
Baselitz 89
Cat. Rais. 627
Drypoint etching on stenciled background paper
26 x 19 3/4 inches
(66 x 50 cm)



Georg Baselitz
Das Tor (The Gate), 1989
5/12
Baselitz 89
Cat. Rais. 632
Drypoint etching on stenciled background paper
26 x 19 3/4 inches
(66 x 50 cm)



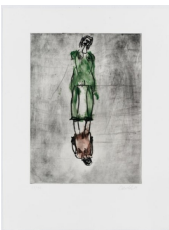
Georg Baselitz
Gross-Klein (Big-Small), 1989
9/12
Baselitz 89
Cat. Rais. 621
Drypoint etching on stenciled background paper
26 x 19 3/4 inches
(66 x 50 cm)

LUHRING AUGUSTINE

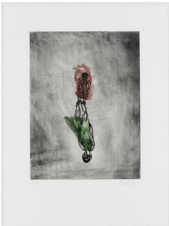
531 West 24th Street
New York NY 10011
tel 212 206 9100 fax 212 206 9055
www.luhringaugustine.com



Georg Baselitz
Rot - Grün (Red - Green), 1989
12/12
Baselitz 89
Cat. Rais. 618
Drypoint etching on stenciled background paper
26 x 19 3/4 inches
(66 x 50 cm)



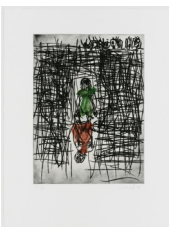
Georg Baselitz
Grünes Kleid (Green Dress), 1989
11/12
Baselitz 89
Cat. Rais. 614
Drypoint etching on stenciled background paper
26 x 19 3/4 inches
(66 x 50 cm)



Georg Baselitz
Kleine Mitte (Small Middle), 1989
7/12
Baselitz 89
Cat. Rais. 615
Drypoint etching on stenciled background paper
26 x 19 3/4 inches
(66 x 50 cm)



Georg Baselitz
Rauch (Smoke), 1989
11/12
Baselitz 89
Cat. Rais. 607
Drypoint etching on stenciled background paper
26 x 19 3/4 inches
(66 x 50 cm)



Georg Baselitz
Schlechte Zeiten (Bad Times), 1989
9/12
Baselitz 89
Cat. Rais. 617
Drypoint etching on stenciled background paper
26 x 19 3/4 inches
(66 x 50 cm)

LUHRING AUGUSTINE

531 West 24th Street
New York NY 10011
tel 212 206 9100 fax 212 206 9055
www.luhringaugustine.com



Georg Baselitz
Untitled, 1979
trial proof: 2. Abzug, 24 VII.79
Cat. Rais. 282
Linocut on paper
30 1/2 x 22 7/8 inches
(77.5 x 58 cm)



Georg Baselitz
Kopf II (Head II), 1984
6/10
G, Baselitz 84
Cat. Rais. 440
Color woodcut on paper
34 7/8 x 23 7/8 inches
(88.5 x 60.6 cm)



Georg Baselitz
Norwegermädchen (Norwegian Girl), 1986
18/25
G Baselitz 86
Cat. Rais. 557
Etching on paper
30 x 22 1/2 inches
(76.3 x 57 cm)



Georg Baselitz
Kleiner Kopf II (Small Head II), 1986
14/20
G. Baselitz 86
Cat. Rais. 507
Woodcut on paper
38 1/4 x 26 inches
(97 x 66 cm)



Georg Baselitz
Richard Wagner als Frau I (Richard Wagner as Woman I), 1986
13/20
Baselitz 86
Cat. Rais. 510
Color woodcut on paper
29 1/2 x 20 3/4 inches
(75 x 52.8 cm)

LUHRING AUGUSTINE

531 West 24th Street
New York NY 10011
tel 212 206 9100 fax 212 206 9055
www.luhringaugustine.com



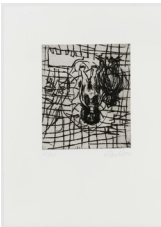
Georg Baselitz
Vier Hände (Four Hands), 1985
9/15
G. Baselitz 85
Cat. Rais. 457
Woodcut on paper
33 3/4 x 24 1/8 inches
(85.8 x 61.2 cm)



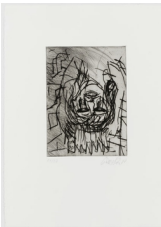
Georg Baselitz
Adler (Eagle), 1981
G. Baselitz
Cat. Rais. 414
Woodcut on paper
From an edition of 17
48 7/8 x 34 5/8 in
(124 x 88 cm)



Georg Baselitz
Mädchen mit Harmonika IV (Girl with Harmonica IV), 1988
19/20
G. Baselitz 88
Cat. Rais. 590
Etching on paper
19 3/4 x 14 3/4 inches
(50.2 x 37.3 cm)



Georg Baselitz
Adler im Keller (Eagle in the Basement), 1987
15/20
G. Baselitz 87
Cat. Rais. 566
Etching on paper
19 3/4 x 14 5/8 inches
(50 x 37 cm)



Georg Baselitz
Mädchen mit Harmonika II (Girl with Harmonica II), 1988
11/20
G. Baselitz 88
Cat. Rais. 563
Etching on paper
19 3/4 x 14 3/4 inches
(50.2 x 37.3 cm)

LUHRING AUGUSTINE

531 West 24th Street
New York NY 10011
tel 212 206 9100 fax 212 206 9055
www.luhringaugustine.com

Set of 6 Prints

Top row from left:



Georg Baselitz
Hand am Ohr (Hand on Ear), 1985
9/15
G Baselitz 85
Cat. Rais. 487
Woodcut on paper
33 3/4 x 24 1/8 inches
(85.8 x 61.2 cm)



Georg Baselitz
Ralf Kopf [Schwarzes Loch bei Brauna/ Ralf]
(Ralf Head [Black Hole at Brauna/ Ralf]), 1985
9/15
G. Baselitz 85
Cat. Rais. 494
Woodcut on paper
33 3/4 x 24 1/8 inches
(85.8 x 61.2 cm)



Georg Baselitz
Italienischer Kopf (Italian Head), 1985
9/15
G. Baselitz 85
Cat. Rais. 490
Woodcut on paper
33 3/4 x 24 1/8 inches
(85.8 x 61.2 cm)

Bottom row from left:



Georg Baselitz
Rotes Ohr [Lockenkopf III] (Red Ear [Curly Hair III]), 1985
8/15
G. Baselitz 85
Cat. Rais. 488
Woodcut on paper
33 3/4 x 24 1/8 inches
(85.8 x 61.2 cm)

LUHRING AUGUSTINE

531 West 24th Street
New York NY 10011
tel 212 206 9100 fax 212 206 9055
www.luhringaugustine.com



Georg Baselitz
Von vorne (From the front), 1985
9/15
G. Baselitz 85
Cat. Rais. 483
Woodcut on paper
33 3/4 x 24 1/8 inches
(85.8 x 61.2 cm)



Georg Baselitz
Rote Hände [Zwei Hände] (Red hands [Two hands]), 1985
G. Baselitz 85
Cat. Rais. 489
Woodcut on paper
9/15
From an edition of 15
33 3/4 x 24 1/8 inches
(85.8 x 61.2 cm)



Georg Baselitz
Schwarze Mutter und weisses Kind (Black Mother and White Child), 1985
14/20
G. Baselitz 85
Cat. Rais. 467
Woodcut on paper
38 1/4 x 26 in
97 x 66 cm



Georg Baselitz
Schwarze Mutter, schwarzes Kind (Black Mother, Black Child), 1985
8/20
G. Baselitz 85
Cat. Rais. 463
Woodcut on paper
38 1/4 x 26 inches
(97 x 66 cm)

LUHRING AUGUSTINE

531 West 24th Street
New York NY 10011
tel 212 206 9100 fax 212 206 9055
www.luhringaugustine.com



Georg Baselitz
Mutter und Kind (Mother and Child), 1985
2/20
G. Baselitz 85
Cat. Rais. 466
Woodcut on paper
38 1/4 x 26 1/8 inches
(97 x 66.5 cm)

Second Gallery, clockwise from left:



Georg Baselitz
Elch kaum (Moose hardly), 1992
20/30
Baselitz 92
Color etching on paper
29 3/4 x 22 5/8 inches
75.6 x 57.5 cm



Georg Baselitz
Grüner Tag (Green Day), 1992
20/30
Baselitz 92
Color etching on paper
29 3/4 x 22 7/8 inches
(75.6 x 58 cm)



Georg Baselitz
Klopfkopf (Knockhead), 1992
10/30
Baselitz 92
Color etching on paper
29 7/8 x 22 1/2 inches
(75.8 x 57 cm)



Georg Baselitz
Im Wald (In the Forest), 1992
20/30
Baselitz 92
Color etching on paper
29 7/8 x 22 5/8 inches
(75.8 x 57.5 cm)

LUHRING AUGUSTINE

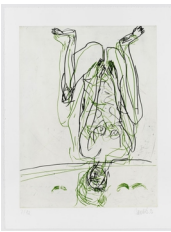
531 West 24th Street
New York NY 10011
tel 212 206 9100 fax 212 206 9055
www.luhringaugustine.com



Georg Baselitz
Zahlenspiel (Numbers game), 1992
20/30
Baselitz 92
Color etching on paper
29 7/8 x 22 5/8 inches
(76 x 57.5 cm)

Set of 9 Prints

Top row from left:



Georg Baselitz
Zwei Streifen (Two Stripes), 1996
7/12
Baselitz 96
Color etching on paper
31 1/2 x 23 7/8 inches
80 x 60.5 cm



Georg Baselitz
Schlafende Frau (Sleeping Woman), 1996
7/12
Baselitz 96
Color etching on paper
31 1/2 x 23 7/8 inches
(80 x 60.5 cm)



Georg Baselitz
Mittelpunkt (Focus), 1996
7/12
Baselitz 96
Etching on paper
31 1/2 x 23 7/8 inches
(80 x 60.5 cm)

Middle row from left:

LUHRING AUGUSTINE

531 West 24th Street
New York NY 10011
tel 212 206 9100 fax 212 206 9055
www.luhringaugustine.com



Georg Baselitz
Sternbild (Constellation), 1996
5/12
Baselitz 96
Etching on paper
31 1/2 x 23 5/8 inches
(80 x 60 cm)



Georg Baselitz
Doppelakt (Double Nude), 1996
7/12
Baselitz 96
Color etching on paper
31 1/2 x 23 7/8 inches
(80 x 60.5 cm)



Georg Baselitz
Zelt (Tent), 1996
7/12
Baselitz 96
Color etching on paper
31 1/2 x 23 5/8 inches
(80 x 60 cm)

Bottom row from left:



Georg Baselitz
Fuß und Knie (Foot and Knee), 1996
7/12
Baselitz 96
Etching on paper
31 1/2 x 23 7/8 inches
(80 x 60.5 cm)



Georg Baselitz
Goldener Schnitt (Golden Ratio), 1996
7/12
Baselitz 96
Etching on paper
31 1/2 x 23 7/8 inches
(80 x 60.5 cm)

LUHRING AUGUSTINE

531 West 24th Street
New York NY 10011
tel 212 206 9100 fax 212 206 9055
www.luhringaugustine.com



Georg Baselitz
Ein Drittel (One Third), 1996
11/12
Baselitz 96
Etching on paper
31 1/2 x 23 7/8 inches
(80 x 60.5 cm)



Georg Baselitz
'45 - November, 1990
29/30
Baselitz 90
Woodcut on paper
48 7/8 x 26 3/4 inches
(124 x 68 cm)



Georg Baselitz
'45 - April, 1990
10/30
Baselitz 90
Woodcut on paper
48 7/8 x 26 3/4 inches
(124 x 68 cm)



Georg Baselitz
'45 - Oktober ('45 - October), 1990
13/30
Baselitz 90
Woodcut on paper
48 7/8 x 26 3/4 inches
(124 x 68 cm)



Georg Baselitz
'45 - Mai ('45 - May), 1990
29/30
G. Baselitz 90
Woodcut on paper
48 7/8 x 26 3/4 inches
(124 x 68 cm)

LUHRING AUGUSTINE

531 West 24th Street
New York NY 10011
tel 212 206 9100 fax 212 206 9055
www.luhringaugustine.com



Georg Baselitz
'45 September, 1990
6/30
Baselitz 90
Woodcut on paper
48 7/8 x 26 3/4 inches
(124 x 68 cm)



Georg Baselitz
Untitled (plate 7 from '45-III), 1991
18/30
Baselitz 91
Etching and drypoint on copper paper
30 1/4 x 22 inches
(77 x 56 cm)